



From \$1,084,900

Stunning doesn't even scratch the surface when talking about The Concord floorplan. This spacious home has various features that will have guests and families gasp as soon as they enter through your covered front porch. After coming in the door and just passing the spacious Zoom office, your eyes will see a wide-open floorplan that allows for the great room, the kitchen, and the dining room to all be viewed from any corner. Cook away on your large kitchen island with gourmet upgrade options, snuggle by the fireplace, enjoy your covered back porch, or take an afternoon nap in the lavishly large owner's suite. With tray ceilings and a spa-like extended bathroom attached, you may not ever want to leave. That's not it for the first floor though. A guest suite and full bath are on the first floor and the laundry room is on the ground floor and can be attached to the master bath ...



4 Bedrooms



3.5 Bathrooms



3,626 Sq.Ft.



2 Stories



2 Car Garage

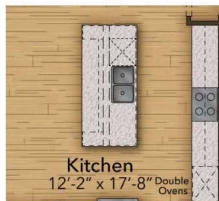
CONTACT US 757-550-2617

WWW.CHESHOMES.COM

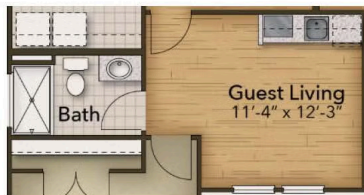


Chesapeake Homes continuously improves home designs and reserves the right to modify home features and specifications without notice or obligation. Square footage and measurements are approximate. Renderings of elevations are artist's concepts. Floor plans vary per elevation. Chesapeake Homes standard features vary by home design and location, please refer to the included features sheet for the community to define specifications. This brochure is for illustrative purposes and not part of the legal contract. Please ask Sales Associate for complete details. © 2025 Chesapeake Homes. Current information as 19th April 2025

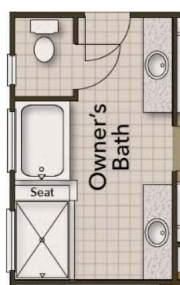
OPTIONS



Gourmet Kitchen Island



Multi Generation Suite



Deluxe Owner's Bath



Sideload with Third Car Garage

CONTACT US 757-550-2617

WWW.CESHOMES.COM



Chesapeake Homes continuously improves home designs and reserves the right to modify home features and specifications without notice or obligation. Square footage and measurements are approximate. Renderings of elevations are artist's concepts. Floor plans vary per elevation. Chesapeake Homes standard features vary by home design and location, please refer to the included features sheet for the community to define specifications. This brochure is for illustrative purposes and not part of the legal contract. Please ask Sales Associate for complete details. © 2025 Chesapeake Homes. Current information as 19th April 2025

FIRST FLOOR



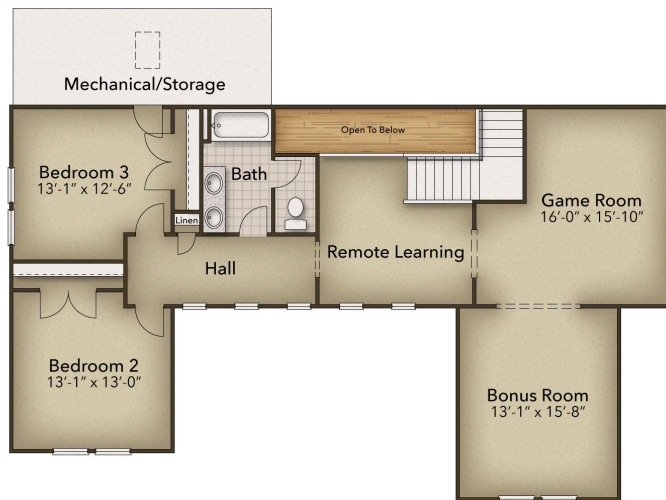
CONTACT US 757-550-2617

WWW.CHESHOMES.COM



Chesapeake Homes continuously improves home designs and reserves the right to modify home features and specifications without notice or obligation. Square footage and measurements are approximate. Renderings of elevations are artist's concepts. Floor plans vary per elevation. Chesapeake Homes standard features vary by home design and location, please refer to the included features sheet for the community to define specifications. This brochure is for illustrative purposes and not part of the legal contract. Please ask Sales Associate for complete details. © 2025 Chesapeake Homes. Current information as 19th April 2025

SECOND FLOOR



CONTACT US 757-550-2617

WWW.CHESHOMES.COM



Chesapeake Homes continuously improves home designs and reserves the right to modify home features and specifications without notice or obligation. Square footage and measurements are approximate. Renderings of elevations are artist's concepts. Floor plans vary per elevation. Chesapeake Homes standard features vary by home design and location, please refer to the included features sheet for the community to define specifications. This brochure is for illustrative purposes and not part of the legal contract. Please ask Sales Associate for complete details. © 2025 Chesapeake Homes. Current information as 19th April 2025