



## Ashville Park Community

### The Roseleigh II Floor Plan

The Roseleigh II proves why this layout was a buyer favorite even before the newly revised plan. Now the spacious 3,500 square-foot Roseleigh II home offers more space, with five bedrooms and four full bathrooms. A covered front porch makes this home feel welcoming right from the front door. Inside the home, you will be amazed by the open floorplan connecting the great room, kitchen, and breakfast nook all together. This space is even more luxurious with the added gourmet kitchen island. Additionally, on the first floor is a study, a formal dining room, and a guest suite with an upgraded full bath. The second level offers endless amounts of space for all. An Owner's Suite with dual closets and a spa-like Owner's Bath makes for the perfect space away from the hustle and bustle. Three additional bedrooms and media room means there's enough room for every member of the family to have their own peaceful retreat. \*\*Photos of Similar Home Shown.\*\*

**\$1,218,153**



5 Bedrooms



4.0 Bathrooms



3,496 Sq.Ft.



2 Stories



3 Car Garage

CONTACT US 757-550-2617

WWW.CESHOMES.COM



Chesapeake Homes continuously improves home designs and reserves the right to modify home features and specifications without notice or obligation. Square footage and measurements are approximate. Renderings of elevations are artist's concepts. Floor plans vary per elevation. Chesapeake Homes standard features vary by home design and location, please refer to the included features sheet for the community to define specifications. This brochure is for illustrative purposes and not part of the legal contract. Please ask Sales Associate for complete details. © 2025 Chesapeake Homes. Current information as 18th April 2025.



## FIRST FLOOR



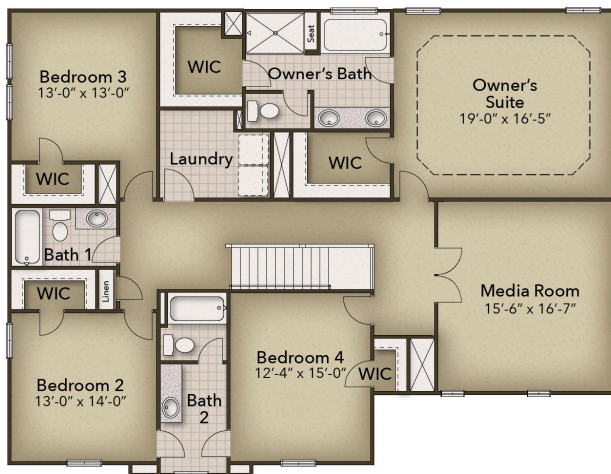
CONTACT US 757-550-2617

WWW.CHESHOMES.COM



Chesapeake Homes continuously improves home designs and reserves the right to modify home features and specifications without notice or obligation. Square footage and measurements are approximate. Renderings of elevations are artist's concepts. Floor plans vary per elevation. Chesapeake Homes standard features vary by home design and location, please refer to the included features sheet for the community to define specifications. This brochure is for illustrative purposes and not part of the legal contract. Please ask Sales Associate for complete details. © 2025 Chesapeake Homes. Current information as 18th April 2025

## SECOND FLOOR



CONTACT US 757-550-2617

WWW.CHESHOMES.COM



Chesapeake Homes continuously improves home designs and reserves the right to modify home features and specifications without notice or obligation. Square footage and measurements are approximate. Renderings of elevations are artist's concepts. Floor plans vary per elevation. Chesapeake Homes standard features vary by home design and location, please refer to the included features sheet for the community to define specifications. This brochure is for illustrative purposes and not part of the legal contract. Please ask Sales Associate for complete details. © 2025 Chesapeake Homes. Current information as 18th April 2025