



The Preserve at Lake Meade Community

The Azalea Floor Plan

Welcome to The Azalea model! With 3,081 square feet of natural lighting and open space, this floorplan is irresistible. Beyond your dining room or possible study, awaits a large living room opening into the kitchen separated by a large island and breakfast nook. This spacious area allows for plenty of entertaining. Just beyond the main living area is a guest suite with a generously sized closet. Take the steps and open the double doors to your sanctuary. The Owner's Suite features a sitting room, two huge walk-in closets, and a Owner's Bathroom with double bowl vanity sinks and a linen closet for extra storage. For your everyday convenience, the laundry room is right down the hall. Three additional bedrooms accompany the Owner's Suite, loft area, and two full bathrooms. The Azalea is the perfect home for a growing family with more than enough space for all! **Please call our Online Sales Consultants at 757-550-2617 to learn more!

\$629,900



5 Bedrooms



4.5 Bathrooms



3,081 Sq.Ft.



2 Stories



2 Car Garage

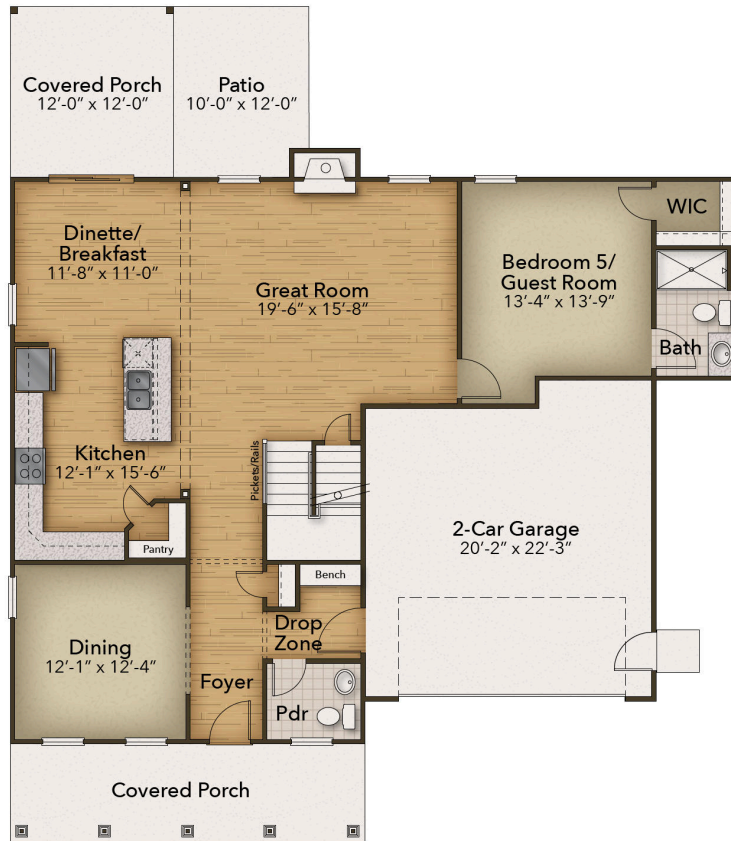
CONTACT US 757-550-2617

WWW.CHESHOMES.COM



Chesapeake Homes continuously improves home designs and reserves the right to modify home features and specifications without notice or obligation. Square footage and measurements are approximate. Renderings of elevations are artist's concepts. Floor plans vary per elevation. Chesapeake Homes standard features vary by home design and location, please refer to the included features sheet for the community to define specifications. This brochure is for illustrative purposes and not part of the legal contract. Please ask

FIRST FLOOR



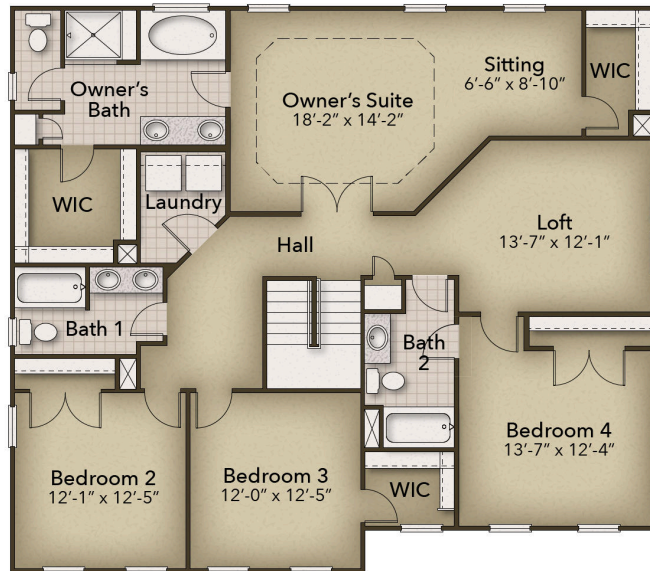
CONTACT US 757-550-2617

WWW.CHESHOMES.COM



Chesapeake Homes continuously improves home designs and reserves the right to modify home features and specifications without notice or obligation. Square footage and measurements are approximate. Renderings of elevations are artist's concepts. Floor plans vary per elevation. Chesapeake Homes standard features vary by home design and location, please refer to the included features sheet for the community to define specifications. This brochure is for illustrative purposes and not part of the legal contract. Please ask Sales Associate for complete details. © 2025 Chesapeake Homes. Current information as 25th April 2025

SECOND FLOOR



CONTACT US 757-550-2617

WWW.CHESHOMES.COM



Chesapeake Homes continuously improves home designs and reserves the right to modify home features and specifications without notice or obligation. Square footage and measurements are approximate. Renderings of elevations are artist's concepts. Floor plans vary per elevation. Chesapeake Homes standard features vary by home design and location, please refer to the included features sheet for the community to define specifications. This brochure is for illustrative purposes and not part of the legal contract. Please ask Sales Associate for complete details. © 2025 Chesapeake Homes. Current information as 25th April 2025