



The Preserve at Lake Meade Community

The Roseleigh Floor Plan

Life is simply divine in The Roseleigh model. A whopping 3,000+ square feet of space results in a new home that's roomy enough for every member of the household. A buyer favorite, this home offers five bedrooms and four full baths. Downstairs holds the essential space your family needs plus formal living and dining rooms. The second level offers endless amounts of space for all. An Owner's Suite with dual closets and a spa-like Owner's Bath makes for the perfect space away from the hustle and bustle. Three additional bedrooms and a media room means there's enough room for every member of the family to have their own peaceful retreat.**Please call our Online Sales Consultants at 757-550-2617 to learn more! Photos of Similar Home Shown.**

\$659,785

 **5 Bedrooms**

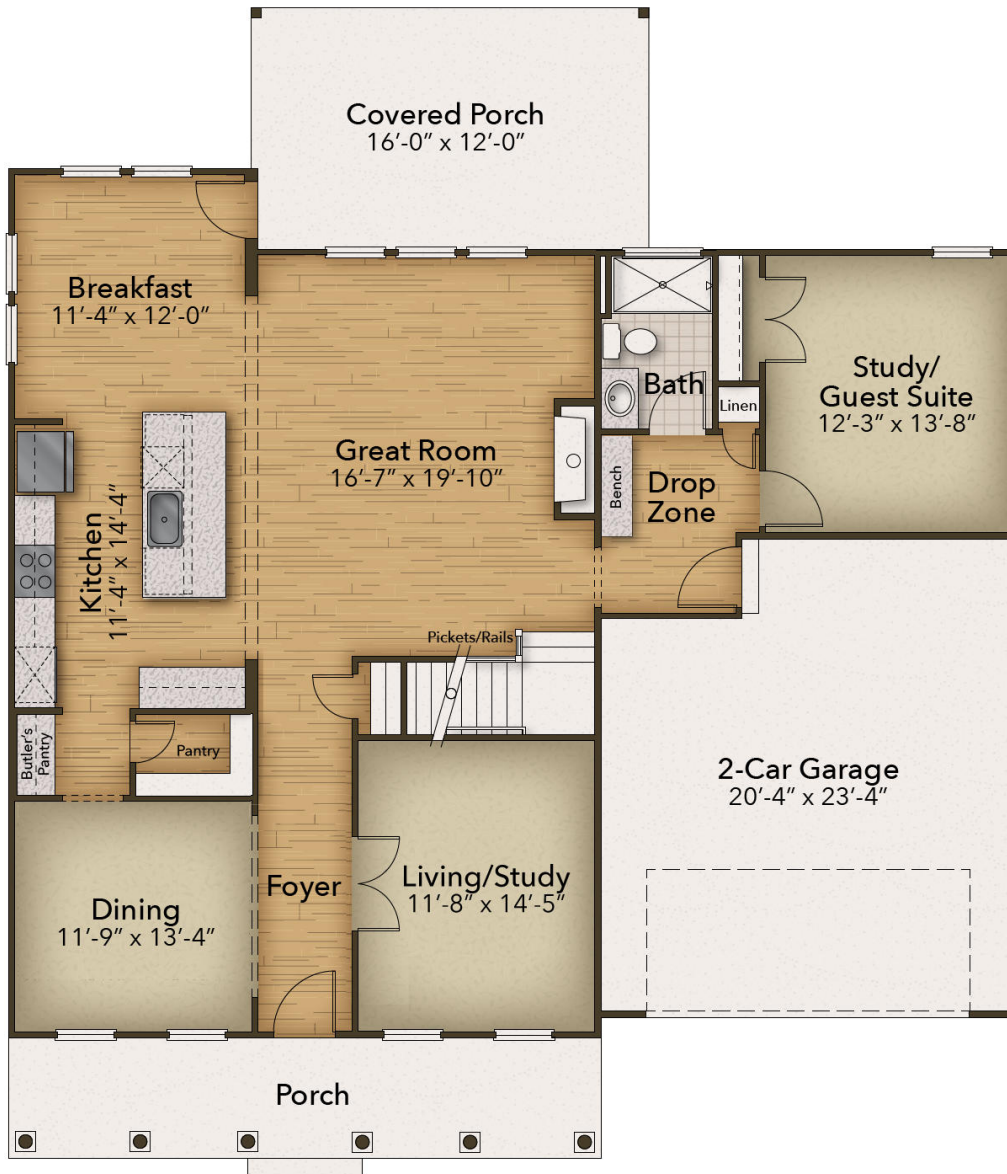
 **4.0 Bathrooms**

 **3,333 Sq.Ft.**

 **2 Stories**

 **2 Car Garage**

FIRST FLOOR

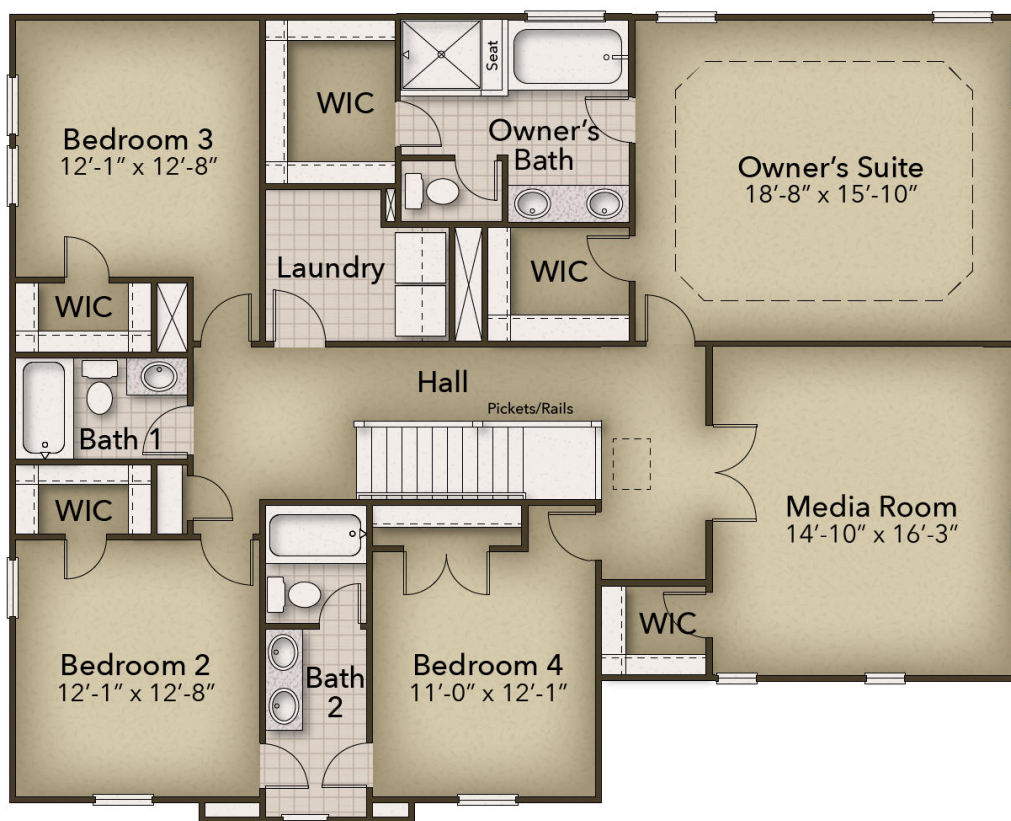


CONTACT US 757-550-2617

WWW.CESHOMES.COM



SECOND FLOOR



CONTACT US 757-550-2617

WWW.CESHOMES.COM

