



## The Preserve at Lake Meade Community

### The Roseleigh Floor Plan

Life feels truly extraordinary in the Roseleigh model. Spanning an impressive 3,333 square feet, this home offers an abundance of space, perfect for every member of the household. A fan favorite, it features five spacious bedrooms and four luxurious full baths. The main floor provides all the essential space your family needs, including a formal living room and dining room. The gourmet kitchen, complete with an expansive island and extended counter and cabinet space, is a chef's dream. To complete the first level, a full bathroom conveniently accompanies the guest suite. Upstairs, you'll find even more room to spread out. The Owner's Suite, with its elegant tray ceilings and deluxe bath, offers the ideal retreat from the everyday. Three additional bedrooms and a spacious Media Room ensure there's plenty of space for everyone to enjoy their own peaceful haven. \*\*Please call our Online Sales Consultants at 757-550-2617 to learn more!

**\$742,900**

 **5 Bedrooms**

 **4.0 Bathrooms**

 **3,333 Sq.Ft.**

 **2 Stories**

 **2 Car Garage**

CONTACT US 757-550-2617

WWW.CHESHOMES.COM



Chesapeake Homes continuously improves home designs and reserves the right to modify home features and specifications without notice or obligation. Square footage and measurements are approximate. Renderings of elevations are artist's concepts. Floor plans vary per elevation. Chesapeake Homes standard features vary by home design and location; please refer to the included features sheet for the community to define specifications. This brochure is for illustrative purposes and not part of the legal contract. Please ask



## FIRST FLOOR



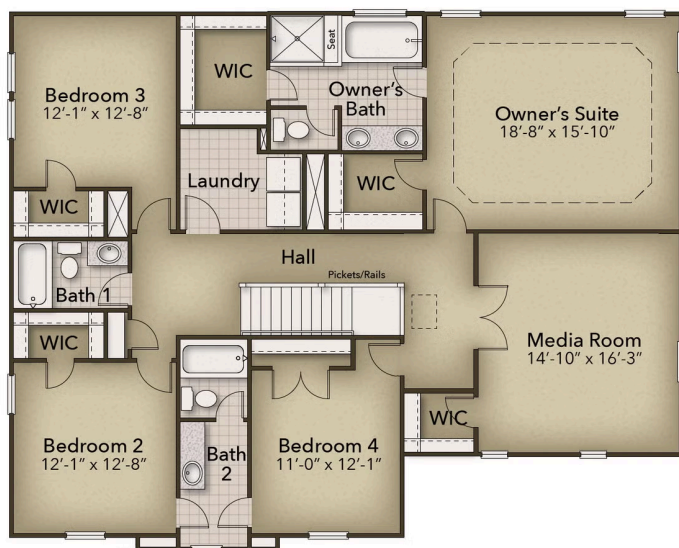
CONTACT US 757-550-2617

WWW.CHESHOMES.COM



Chesapeake Homes continuously improves home designs and reserves the right to modify home features and specifications without notice or obligation. Square footage and measurements are approximate. Renderings of elevations are artist's concepts. Floor plans vary per elevation. Chesapeake Homes standard features vary by home design and location, please refer to the included features sheet for the community to define specifications. This brochure is for illustrative purposes and not part of the legal contract. Please ask Sales Associate for complete details. © 2025 Chesapeake Homes. Current information as 25th April 2025

## SECOND FLOOR



CONTACT US 757-550-2617

WWW.CHESHOMES.COM



Chesapeake Homes continuously improves home designs and reserves the right to modify home features and specifications without notice or obligation. Square footage and measurements are approximate. Renderings of elevations are artist's concepts. Floor plans vary per elevation. Chesapeake Homes standard features vary by home design and location, please refer to the included features sheet for the community to define specifications. This brochure is for illustrative purposes and not part of the legal contract. Please ask Sales Associate for complete details. © 2025 Chesapeake Homes. Current information as 25th April 2025