



From \$684,900

Welcome Home to The Berkeley! The Berkeley is the picture-perfect floorplan for those looking for storage and space. As soon as you open your front door, you are welcomed by an open dining room to one side of the foyer and a Study on the other side. Upgrade these spaces with coffered ceilings in the Dining Room or turn the Study into a guest suite. A powder room can be found on this level with the option to turn this into a full bathroom. The dining room is connected to the kitchen by a butler's pantry and spacious pantry. Then continue through the kitchen past the large kitchen island that can be made even more luxurious with the gourmet upgrade, to find your breakfast nook and rear covered porch access. The Owner's Suite and laundry room are also found on the first floor right past the open great room. Add a fireplace to the great room to make movie night and fall evenings even better in your new home. The owner's suite features stunning tray ceilings, two large walk-in closets, and a spacious owner's bathroom that can be upgraded to deluxe features. Head ...



5 Bedrooms



2.5 Bathrooms



3,175 Sq.Ft.



2 Stories



2 Car Garage

CONTACT US 757-550-2617

WWW.CHESHOMES.COM



Chesapeake Homes continuously improves home designs and reserves the right to modify home features and specifications without notice or obligation. Square footage and measurements are approximate. Renderings of elevations are artist's concepts. Floor plans vary per elevation. Chesapeake Homes standard features vary by home design and location, please refer to the included features sheet for the community to define specifications. This brochure is for illustrative purposes and not part of the legal contract. Please ask Sales Associate for complete details. © 2025 Chesapeake Homes. Current information as 18th April 2025

FIRST FLOOR



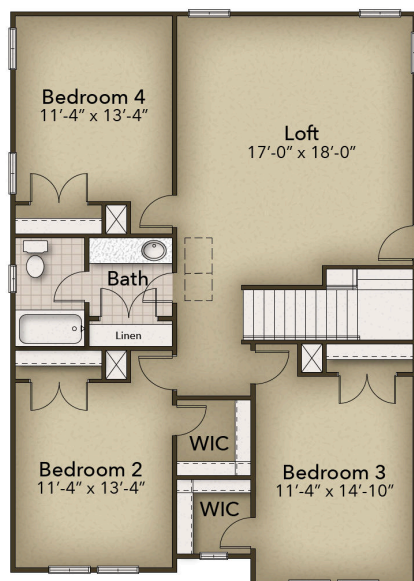
CONTACT US 757-550-2617

WWW.CHESHOMES.COM



Chesapeake Homes continuously improves home designs and reserves the right to modify home features and specifications without notice or obligation. Square footage and measurements are approximate. Renderings of elevations are artist's concepts. Floor plans vary per elevation. Chesapeake Homes standard features vary by home design and location, please refer to the included features sheet for the community to define specifications. This brochure is for illustrative purposes and not part of the legal contract. Please ask Sales Associate for complete details. © 2025 Chesapeake Homes. Current information as 18th April 2025

SECOND FLOOR



CONTACT US 757-550-2617

WWW.CHESHOMES.COM



Chesapeake Homes continuously improves home designs and reserves the right to modify home features and specifications without notice or obligation. Square footage and measurements are approximate. Renderings of elevations are artist's concepts. Floor plans vary per elevation. Chesapeake Homes standard features vary by home design and location, please refer to the included features sheet for the community to define specifications. This brochure is for illustrative purposes and not part of the legal contract. Please ask Sales Associate for complete details. © 2025 Chesapeake Homes. Current information as 18th April 2025