



River Club Community

The Bennett Floor Plan

Enter the beautiful Bennett Model from your covered front porch and take in the open-space floorplan. The Bennett features a large great room with coffered ceilings. While kicking back and relaxing in your new great room, that favorite snack isn't far away as the kitchen blends into the floorplan allowing for daily function. A stunning gourmet island elegantly divides the gourmet kitchen, dining area, and drop zone from the rest of the first floor. Perfect for cooking and baking enthusiasts, this spacious kitchen features an ideal layout to bring your culinary creations to life. But the first floor of The Bennett doesn't stop there! With the owner's suite located on this level, your day-to-day tasks have never been this easy, especially with the easy access flow of bedroom to bathroom to laundry room. Plus you will fall in love with the huge walk-in closet connected to the owner's bathroom. Lastly, on the first floor, The Bennett features an additional bedroom with a private full bath attached. Perfect for when guests from out of town need a place to stay. The second floor of The Bennett is just as gorgeous as the first. ...

\$885,900

 **5 Bedrooms**

 **3.5 Bathrooms**

 **3,489 Sq.Ft.**

 **2 Stories**

 **3 Car Garage**

CONTACT US 757-550-2617

WWW.CHESHOMES.COM



Chesapeake Homes continuously improves home designs and reserves the right to modify home features and specifications without notice or obligation. Square footage and measurements are approximate. Renderings of elevations are artist's concepts. Floor plans vary per elevation. Chesapeake Homes standard features vary by home design and location, please refer to the included features sheet for the community to define specifications. This brochure is for illustrative purposes and not part of the legal contract. Please ask Sales Associate for complete details. © 2025 Chesapeake Homes. Current information as 18th April 2025.

FIRST FLOOR



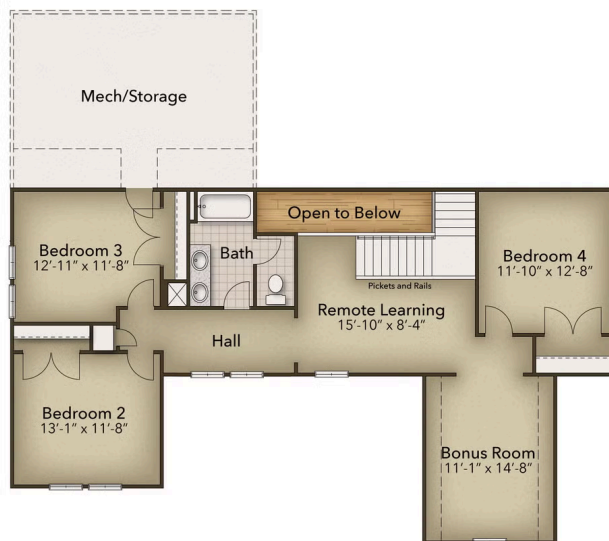
CONTACT US 757-550-2617

WWW.CESHOMES.COM



Chesapeake Homes continuously improves home designs and reserves the right to modify home features and specifications without notice or obligation. Square footage and measurements are approximate. Renderings of elevations are artist's concepts. Floor plans vary per elevation. Chesapeake Homes standard features vary by home design and location, please refer to the included features sheet for the community to define specifications. This brochure is for illustrative purposes and not part of the legal contract. Please ask Sales Associate for complete details. © 2025 Chesapeake Homes. Current information as 18th April 2025

SECOND FLOOR



CONTACT US 757-550-2617

WWW.CHESHOMES.COM



Chesapeake Homes continuously improves home designs and reserves the right to modify home features and specifications without notice or obligation. Square footage and measurements are approximate. Renderings of elevations are artist's concepts. Floor plans vary per elevation. Chesapeake Homes standard features vary by home design and location, please refer to the included features sheet for the community to define specifications. This brochure is for illustrative purposes and not part of the legal contract. Please ask Sales Associate for complete details. © 2025 Chesapeake Homes. Current information as 18th April 2025