



River Club Community

The Azalea Floor Plan

Welcome to The Azalea model! This open-concept plan allows for natural lighting to fill the 3,016 square feet of space it offers. The spacious living room flows right into the kitchen separated only by a large island and breakfast nook. It's the perfect place to entertain family and friends either on the covered rear porch or by the fireplace in the Great Room. The first-floor layout continues to expand past the living room into a guest suite. This bedroom is fitted with a generously sized closet. Now head to the second floor up the stairs and open the double doors to your Owner's Suite. This personal sanctuary has plenty of space with two walk-in closets, a sitting area, and an extensive attached owner's bathroom. No worries about a crowded morning bathroom routine here, with a double sink vanity, linen closet, and separate toilet area. Three additional bedrooms and two full bathrooms can also be found on the second floor, each room has a sizable closet. The laundry room is also located on this floor for your daily convenience. It is across the hall from the natural lite loft. ...

\$625,900

-  5 Bedrooms
-  3.5 Bathrooms
-  3,016 Sq.Ft.
-  2 Stories
-  2 Car Garage

CONTACT US 757-550-2617

WWW.CESHOMES.COM



Chesapeake Homes continuously improves home designs and reserves the right to modify home features and specifications without notice or obligation. Square footage and measurements are approximate. Renderings of elevations are artist's concepts. Floor plans vary per elevation. Chesapeake Homes standard features vary by home design and location, please refer to the included features sheet for the community to define specifications. This brochure is for illustrative purposes and not part of the legal contract. Please ask Sales Associate for complete details. © 2025 Chesapeake Homes. Current information as 18th April 2025.

FIRST FLOOR



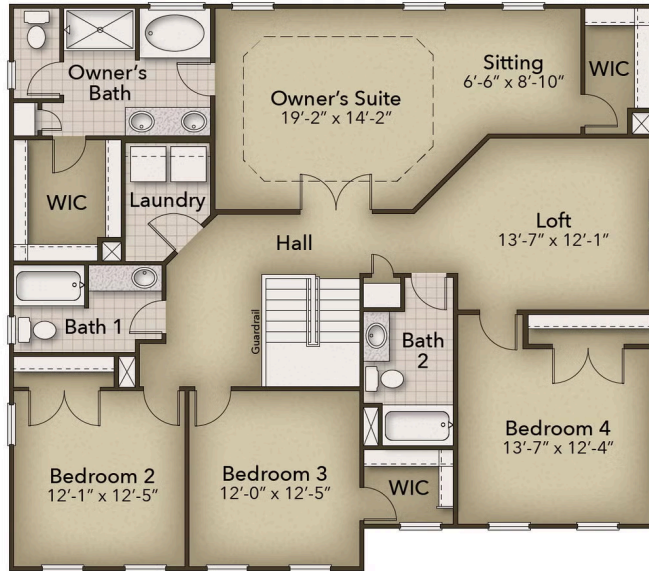
CONTACT US 757-550-2617

WWW.CESHOMES.COM



Chesapeake Homes continuously improves home designs and reserves the right to modify home features and specifications without notice or obligation. Square footage and measurements are approximate. Renderings of elevations are artist's concepts. Floor plans vary per elevation. Chesapeake Homes standard features vary by home design and location, please refer to the included features sheet for the community to define specifications. This brochure is for illustrative purposes and not part of the legal contract. Please ask Sales Associate for complete details. © 2025 Chesapeake Homes. Current information as 18th April 2025

SECOND FLOOR



CONTACT US 757-550-2617

WWW.CESHOMES.COM



Chesapeake Homes continuously improves home designs and reserves the right to modify home features and specifications without notice or obligation. Square footage and measurements are approximate. Renderings of elevations are artist's concepts. Floor plans vary per elevation. Chesapeake Homes standard features vary by home design and location, please refer to the included features sheet for the community to define specifications. This brochure is for illustrative purposes and not part of the legal contract. Please ask Sales Associate for complete details. © 2025 Chesapeake Homes. Current information as 18th April 2025