



River Club Community

The Azalea Floor Plan

Welcome to The Azalea model! This open-concept plan allows for natural lighting to fill the 3,081 square feet of space it offers. The spacious living room flows right into the kitchen separated only by a large island and breakfast nook. This home has been upgraded with the alternate kitchen layout, which allows direct access to the dining room. It's the perfect place to entertain family and friends. It's even more welcoming with the rear covered porch and Great Room fireplace. The full downstairs bedroom is complete with a full bath, making it the optimal comfy space for your guests. Now head to the second floor up the stairs and open the double doors to your Owner's Suite. This personal sanctuary has plenty of space with two walk-in closets, a sitting area, and an extensive attached deluxe owner's bathroom. No worries about a crowded morning bathroom routine here, with a double sink vanity, linen closet, and separate toilet area. The laundry room is also located on this floor for your daily convenience. It is across the hall from the natural light loft. This home is a perfect home that is ...

\$664,900



5 Bedrooms



4.5 Bathrooms



3,081 Sq.Ft.



2 Stories



2 Car Garage

CONTACT US 757-550-2617

WWW.CESHOMES.COM



Chesapeake Homes continuously improves home designs and reserves the right to modify home features and specifications without notice or obligation. Square footage and measurements are approximate. Renderings of elevations are artist's concepts. Floor plans vary per elevation. Chesapeake Homes standard features vary by home design and location, please refer to the included features sheet for the community to define specifications. This brochure is for illustrative purposes and not part of the legal contract. Please ask Sales Associate for complete details. © 2024 Chesapeake Homes. Current information as 21st December 2024

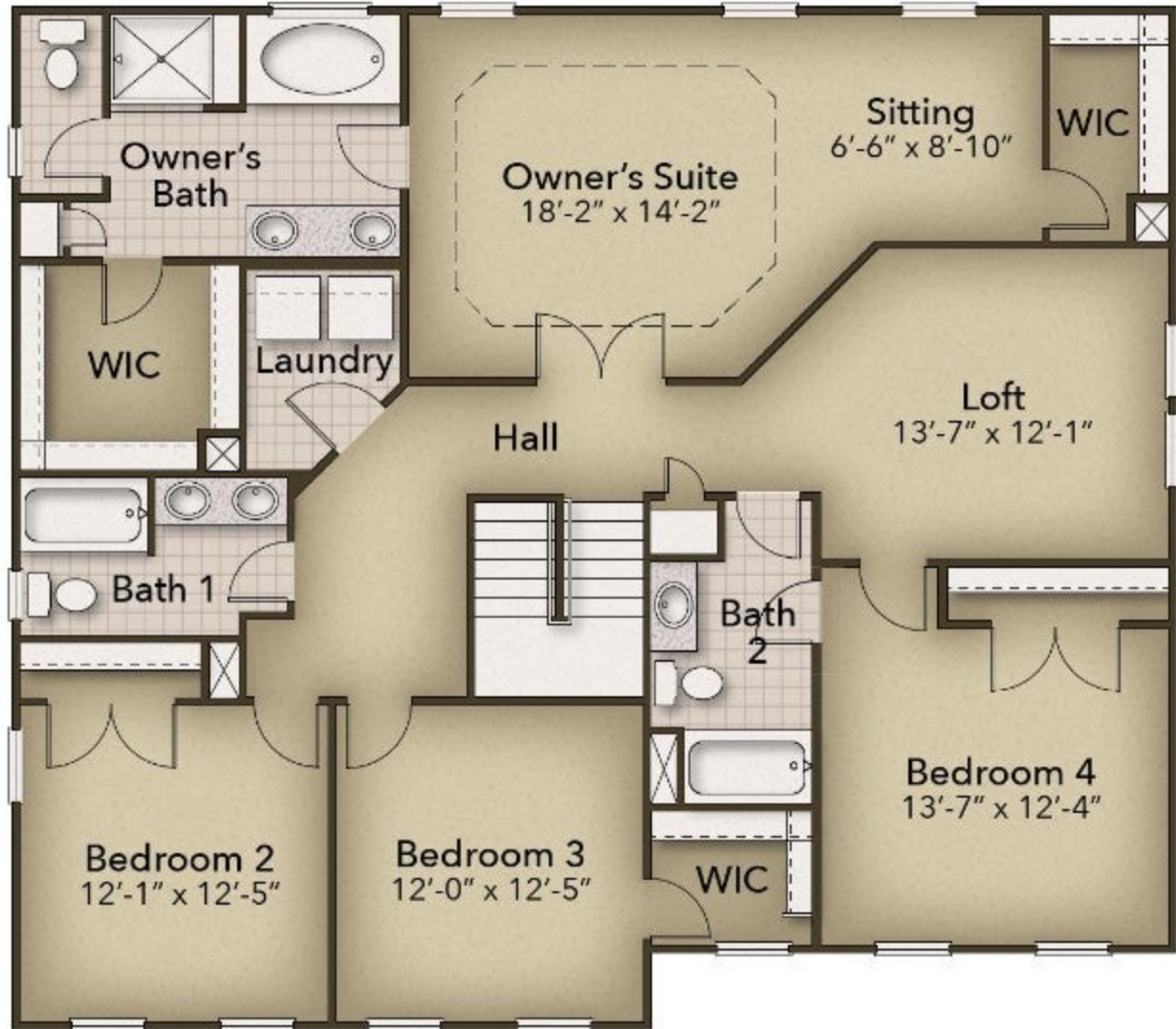
FIRST FLOOR



CONTACT US 757-550-2617

WWW.CESHOMES.COM

SECOND FLOOR



CONTACT US 757-550-2617

WWW.CESHOMES.COM