



Townes at Coliseum Central Community

The Ambrosia Floor Plan

The Ambrosia is a concise floorplan that combines daily functionality and open relaxed living. On the first floor, you will enter your foyer to find a bedroom and attached full bathroom. On the Second-floor you will find a wide open area that consists of your great room, kitchen, and dining area. In the center of it all is a large kitchen island. Lastly, on the third floor, you will find your laundry room, two more bedrooms, and your owner's suite with a deluxe upgrade owner's bathroom attached. All 2,155 square feet are used to advance your daily life and will make your life even easier after a long day.

\$419,900

 **4 Bedrooms**

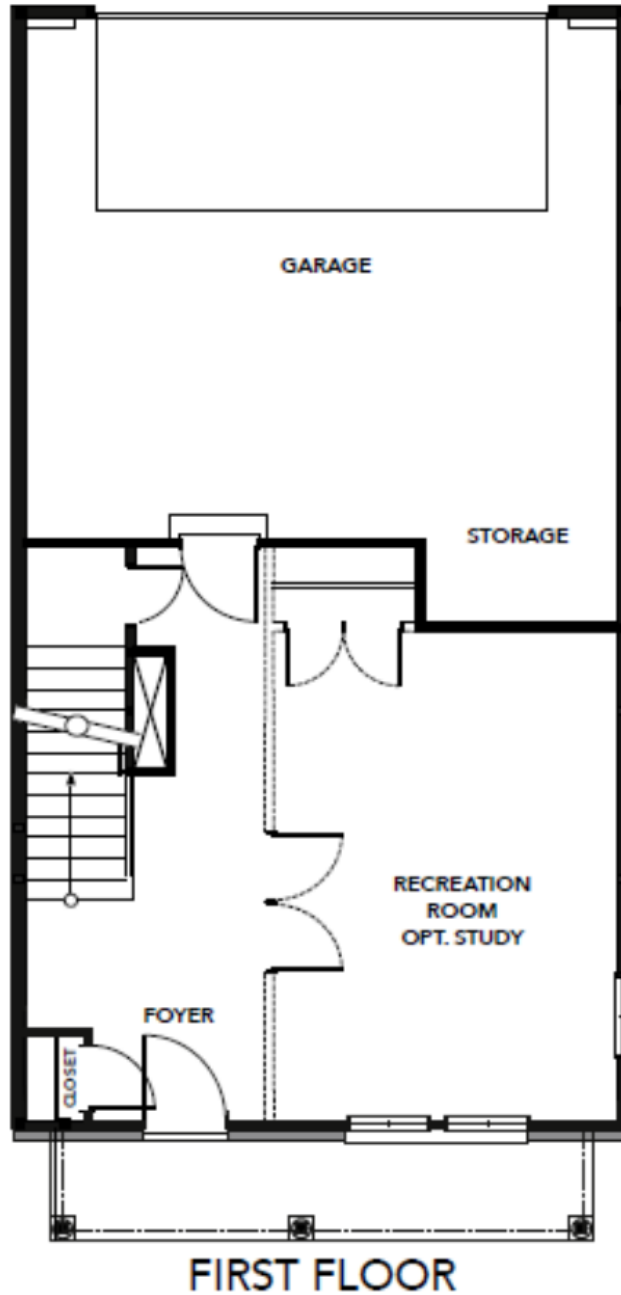
 **3.5 Bathrooms**

 **2,155 Sq.Ft.**

 **3 Stories**

 **2 Car Garage**

FIRST FLOOR

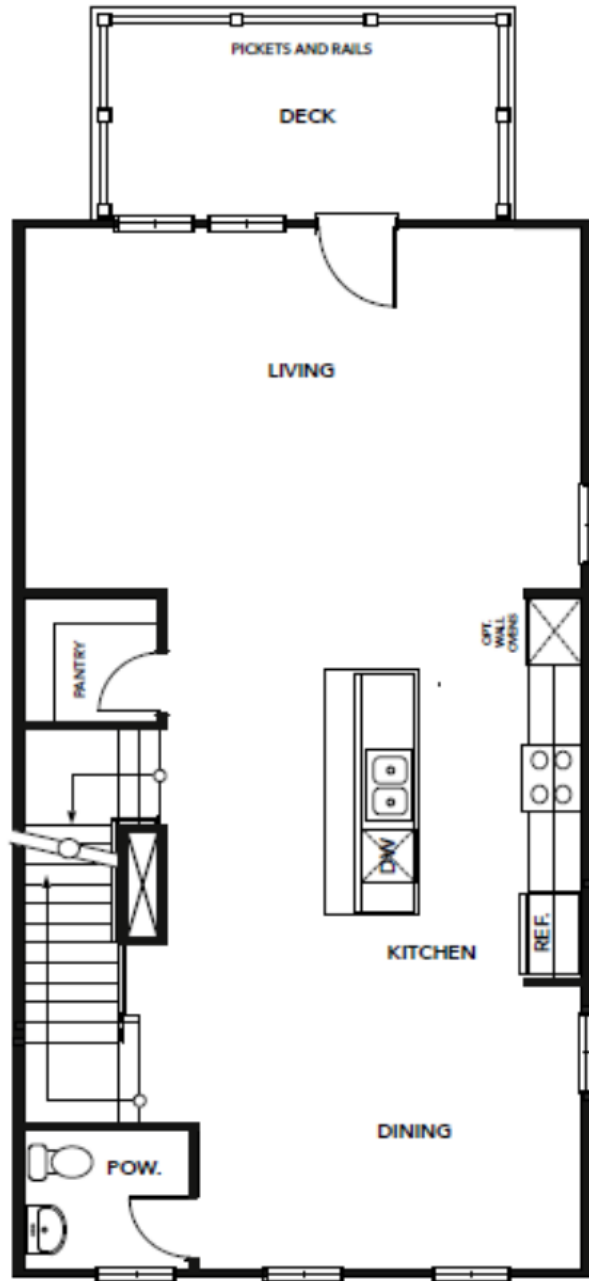


CONTACT US 757-550-2617

WWW.CESHOMES.COM



SECOND FLOOR



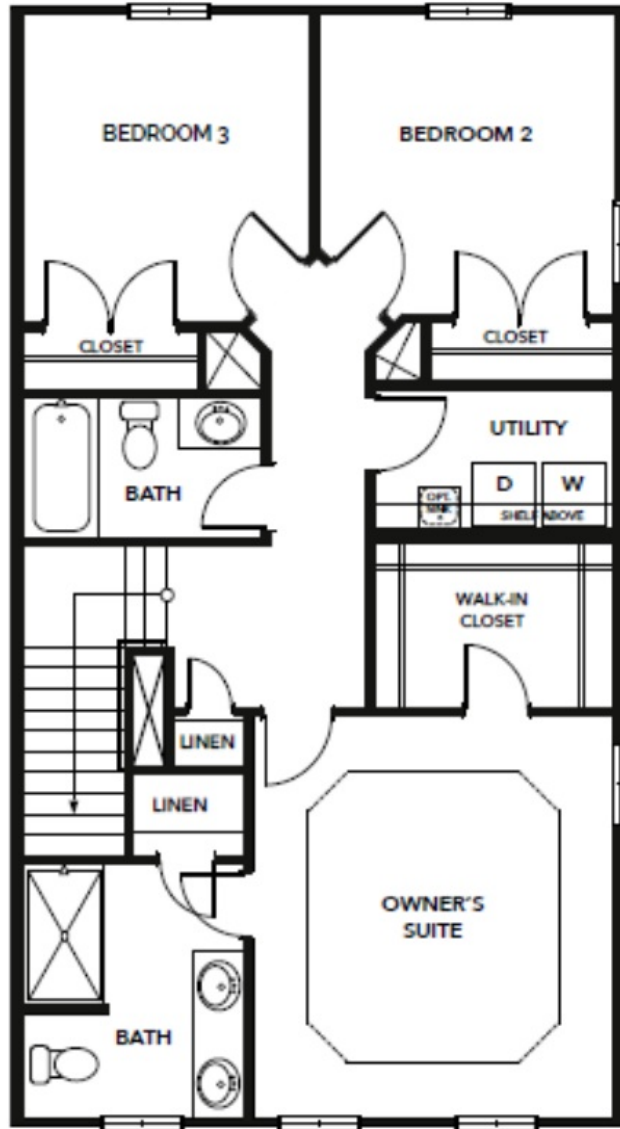
SECOND FLOOR

CONTACT US 757-550-2617

WWW.CESHOMES.COM



THIRD FLOOR



THIRD FLOOR

CONTACT US 757-550-2617

WWW.CESHOMES.COM

