



## Townes at Coliseum Central Community

### The Ambrosia Floor Plan

The Ambrosia is a concise floorplan that combines daily functionality and open relaxed living. On the first floor, you will enter your foyer to find a spacious bedroom and attached full bath. On the Second-floor you will find a wide open area that consists of your great room, kitchen, and dining area. In the center of it all is a large kitchen island. Lastly, on the third floor, you will find your laundry room, two more bedrooms, and your owner's suite with an attached upgraded deluxe owner's bathroom. All 2,155 square feet are used to advance your daily life and will make your life even easier after a long day.

*\$419,900*



4 Bedrooms



3.5 Bathrooms



2,155 Sq.Ft.

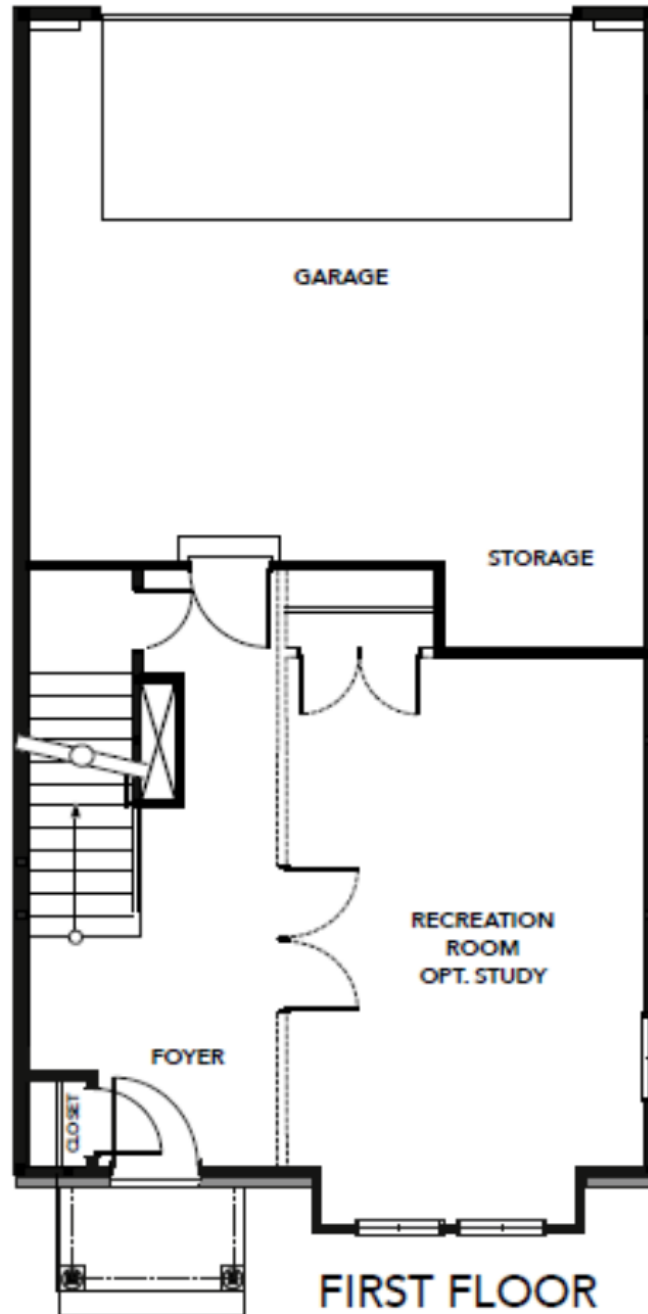


3 Stories



2 Car Garage

## FIRST FLOOR

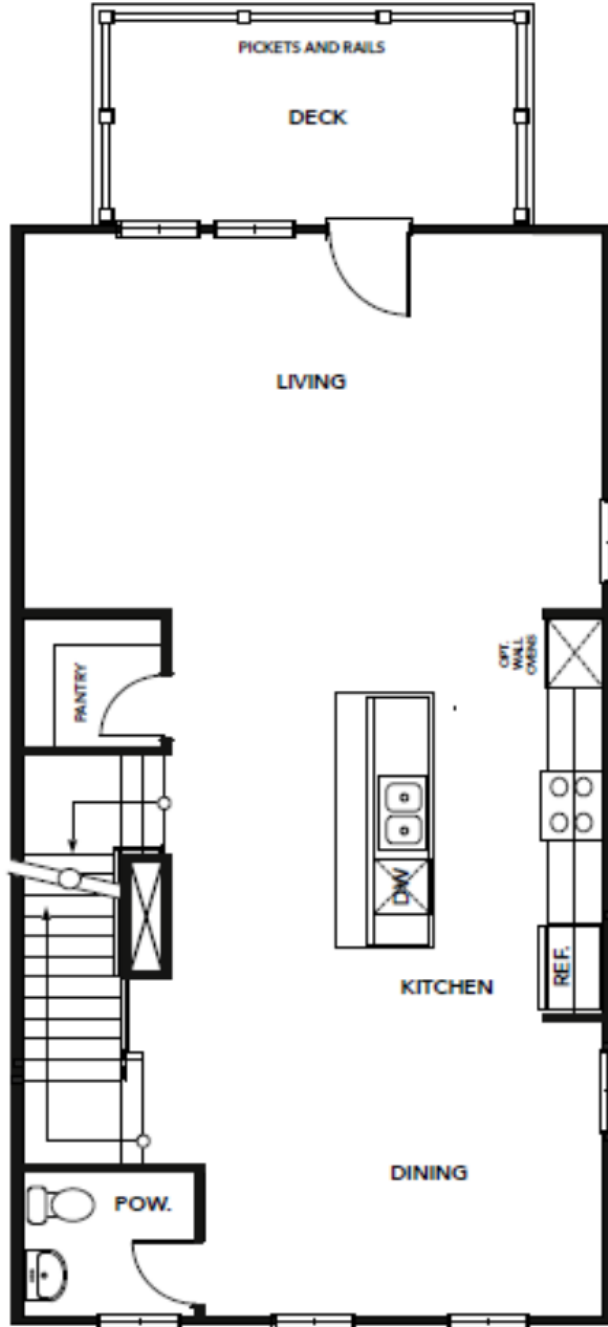


**CONTACT US 757-550-2617**

**WWW.CESHOMES.COM**



## SECOND FLOOR



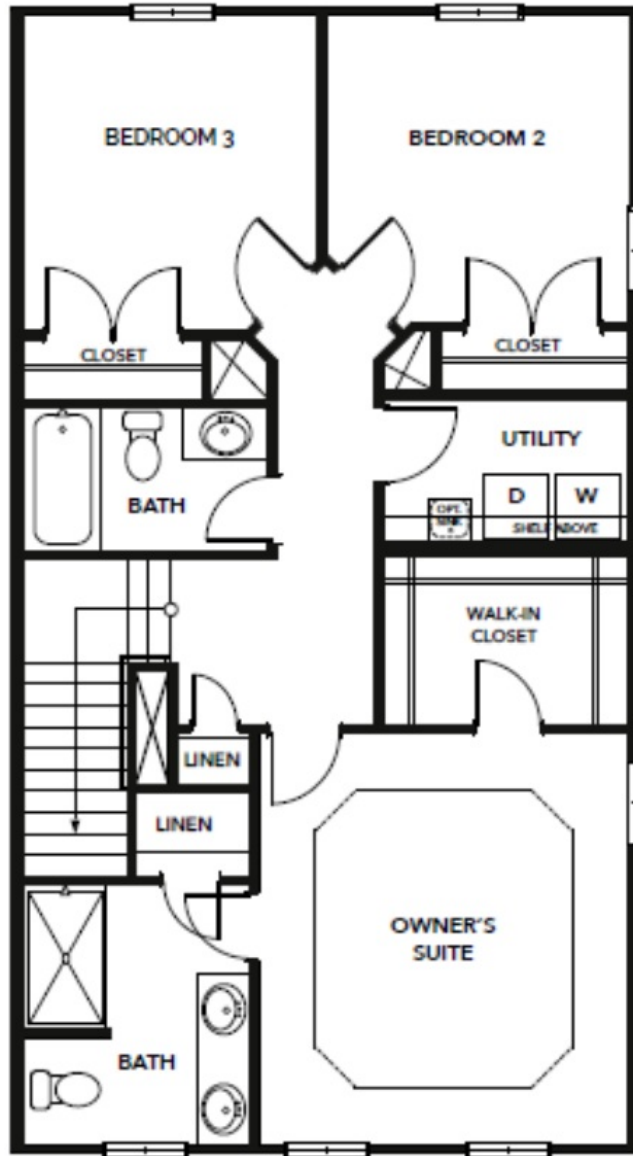
## SECOND FLOOR

**CONTACT US 757-550-2617**

**WWW.CESHOMES.COM**



## THIRD FLOOR



THIRD FLOOR

**CONTACT US 757-550-2617**

**WWW.CESHOMES.COM**

