



## H2O Community

### The Tahoe Floor Plan

The Tahoe features a unique floor plan that is complete with two bedrooms and two and a half bathrooms. With over 1,500 square feet of comfortable living space, the Tahoe offers ample space and a wide range of options to make this home YOURS! The front entrance welcomes you into a quaint foyer, coat closet, and a staircase leading upward to the second level of the main living area. Coming from up the stairs, venture into a wide-open space featuring a spacious great room, a state-of-the-art kitchen with a sizable pantry connected to an open dining room, half bathroom, and deck off the rear of the home. This deck is perfect for enjoying sunny afternoons outdoors. The Tahoe features two bedrooms on the top level - an owner's suite alongside another generously sized bedroom, each providing a private bathroom! The Owner's Suite is completed with a tray ceiling, large walk-in closet, and double vanity in the bathroom. This model was designed with all your needs and wants in mind, make The Tahoe the plan you call home today!

**\$299,900**

 **2 Bedrooms**

 **2.5 Bathrooms**

 **1,544 Sq.Ft.**

 **3 Stories**

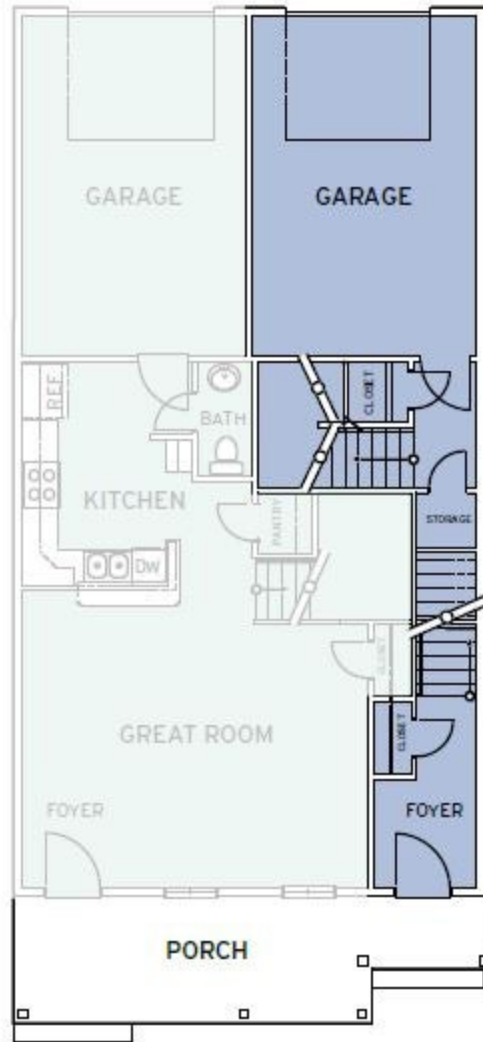
 **1 Car Garage**

**CONTACT US 757-550-2617**

**WWW.CESHOMES.COM**



## FIRST FLOOR



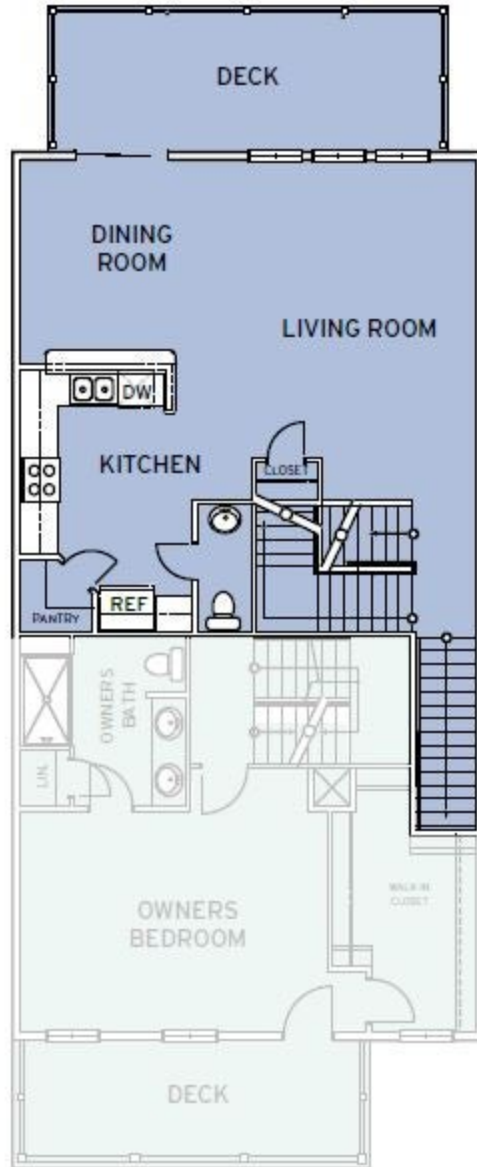
FIRST FLOOR

**CONTACT US 757-550-2617**

**WWW.CESHOMES.COM**



## SECOND FLOOR



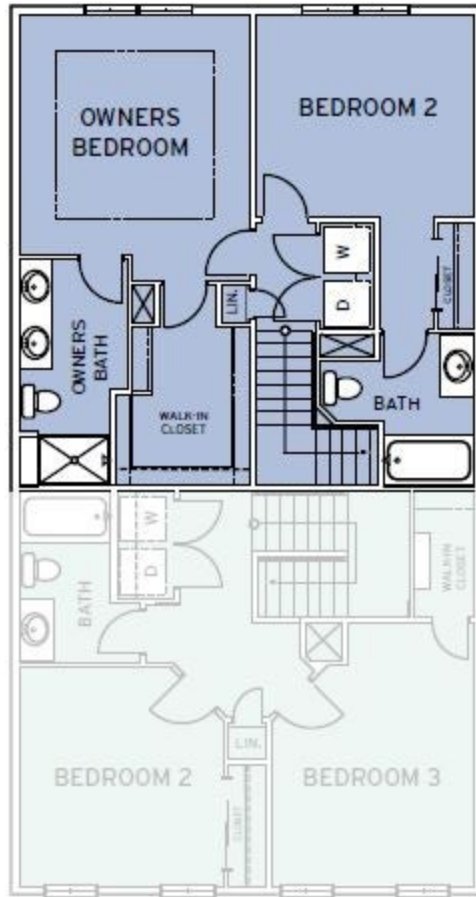
SECOND FLOOR

**CONTACT US 757-550-2617**

**WWW.CESHOMES.COM**



**THIRD FLOOR**



**THIRD FLOOR**

**CONTACT US 757-550-2617**

**WWW.CESHOMES.COM**

