



## H2O Community

### The Placid Floor Plan

The Placid features a unique floorplan that is complete with three bedrooms, two and a half bathrooms, 1,650 square feet, and a one-car garage. This floorplan is comfortably quaint and ready to be called home! The Placid features a huge great room for entertaining or relaxation, a spacious kitchen fit for any connoisseur, plus a half bath and single-car, rear-loading garage on the first level with a shared sizeable welcoming front porch. There are plenty of rooms for family or roommates. First off, the owner's suite on the second floor is located alongside a luxurious owner's bathroom with double vanity and a massive walk-in closet. The owner's suite leads outdoors to a deck perfect for spending sunny afternoons on. On the third floor, you will find two more generously sized bedrooms with a full bathroom, laundry closet, and large linen closet beside. This home is built with beauty and convenience in mind. Make The Placid the place you call home today!

**\$319,900**



**3 Bedrooms**



**2.5 Bathrooms**



**1,650 Sq.Ft.**



**3 Stories**



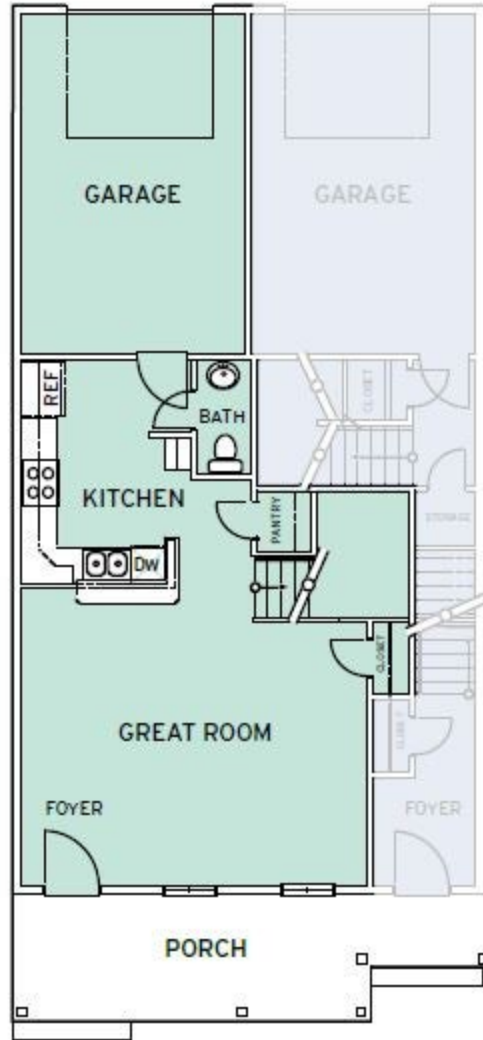
**1 Car Garage**

**CONTACT US 757-550-2617**

**WWW.CESHOMES.COM**



## FIRST FLOOR



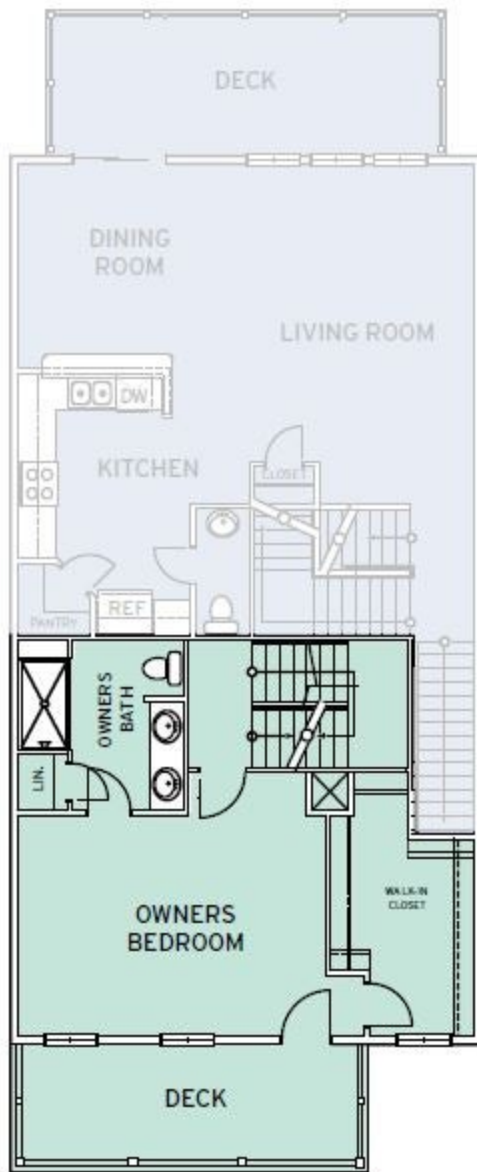
FIRST FLOOR

**CONTACT US 757-550-2617**

**WWW.CESHOMES.COM**



## SECOND FLOOR



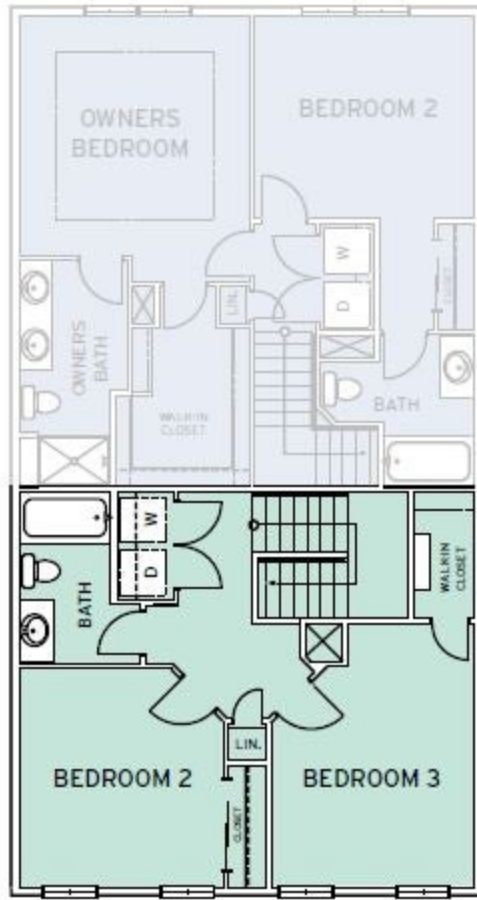
SECOND FLOOR

**CONTACT US 757-550-2617**

**WWW.CESHOMES.COM**



### THIRD FLOOR



THIRD FLOOR

**CONTACT US 757-550-2617**

**WWW.CESHOMES.COM**

