



## H2O Community

### The Champlain Floor Plan

The Champlain is our largest three-story townhome plan featuring three spacious bedrooms with two and a half baths. Enter into this plan into a foyer that leads you to the vast great room connected to the state-of-the-art kitchen. The first floor also offers a half bathroom and one car garage. Up the staircase onto the second floor, you will find two generously sized bedrooms each with two windows a piece giving plenty of natural light. This floor also features a full bathroom and laundry room. This model's owner's suite is on the top level for maximum privacy. This large owner's suite is finished with a tray ceiling and a roomy walk-in closet. The owner's bathroom completes the space with a soaking tub, shower, and double vanity along with a separate toilet room. Equally stunning outside as it is inside, this gorgeous model is meant for years of comfort. As with all models, a single-car, rear-loading garage offers discreet entrance to and exit from your home. Call The Champlain home today!

**\$329,900**



**3 Bedrooms**



**2.5 Bathrooms**



**1,890 Sq.Ft.**



**3 Stories**



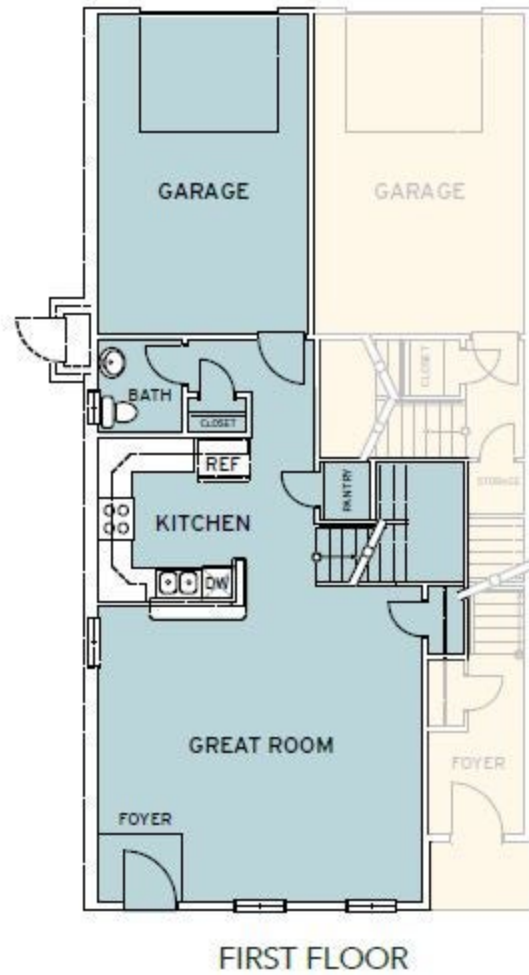
**1 Car Garage**

**CONTACT US 757-550-2617**

**WWW.CESHOMES.COM**



## FIRST FLOOR

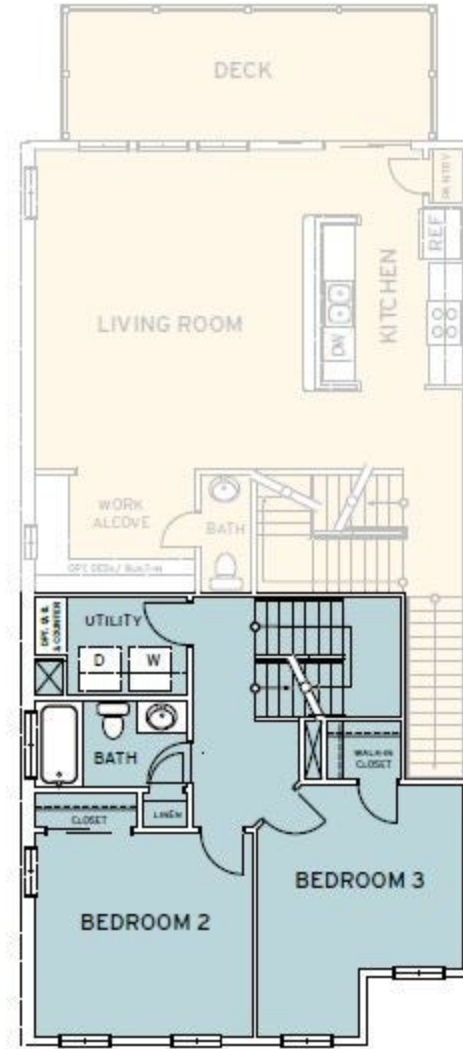


**CONTACT US 757-550-2617**

**WWW.CESHOMES.COM**



## SECOND FLOOR



SECOND FLOOR

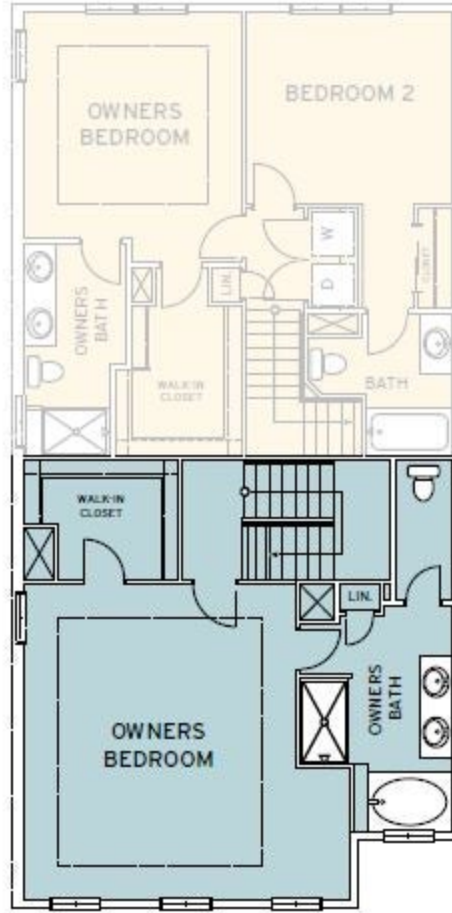
**CONTACT US 757-550-2617**

**WWW.CESHOMES.COM**





### THIRD FLOOR



THIRD FLOOR

**CONTACT US 757-550-2617**

**WWW.CESHOMES.COM**

