



From \$574,900

The Wisteria has plenty of downstairs living with wide-open gathering space for family meals or game night. The spacious side-load two-car garage provides beautiful curb appeal and bountiful storage space. On the first floor, a dining room is off the foyer and butler's pantry leading into the open kitchen and breakfast area. The Great Room has plenty of windows and opens into a covered rear porch for enjoying those relaxing evenings or South Carolina sunsets. There is also a study and conveniently located powder room that offers a secluded space perfect for a home office. The second floor features an enormous Owner's suite and Bath. Add an optional Bonus Room or a Deluxe Owner's bath for more of a luxurious oasis. The second and third bedrooms, along with a full bathroom and laundry room complete the second-floor living space. The over garage storage is a major plus for this floorplan. There are so many additional options that can enhance this already stunning floorplan.



3 Bedrooms



3.5 Bathrooms



3,300 Sq.Ft.



2 Stories



2 Car Garage

CONTACT US 757-550-2617

WWW.CHESHOMES.COM



Chesapeake Homes continuously improves home designs and reserves the right to modify home features and specifications without notice or obligation. Square footage and measurements are approximate. Renderings of elevations are artist's concepts. Floor plans vary per elevation. Chesapeake Homes standard features vary by home design and location, please refer to the included features sheet for the community to define specifications. This brochure is for illustrative purposes and not part of the legal contract. Please ask Sales Associate for complete details. © 2025 Chesapeake Homes. Current information as 28th April 2025

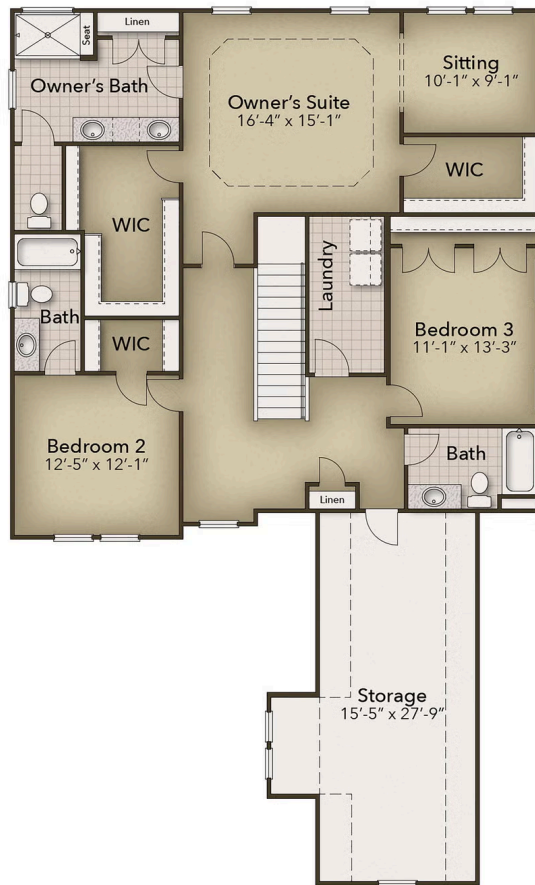


CONTACT US 757-550-2617

WWW.CHESHOMES.COM



Chesapeake Homes continuously improves home designs and reserves the right to modify home features and specifications without notice or obligation. Square footage and measurements are approximate. Renderings of elevations are artist's concepts. Floor plans vary per elevation. Chesapeake Homes standard features vary by home design and location, please refer to the included features sheet for the community to define specifications. This brochure is for illustrative purposes and not part of the legal contract. Please ask Sales Associate for complete details. © 2025 Chesapeake Homes. Current information as 28th April 2025



CONTACT US 757-550-2617

WWW.CHESHOMES.COM



Chesapeake Homes continuously improves home designs and reserves the right to modify home features and specifications without notice or obligation. Square footage and measurements are approximate. Renderings of elevations are artist's concepts. Floor plans vary per elevation. Chesapeake Homes standard features vary by home design and location, please refer to the included features sheet for the community to define specifications. This brochure is for illustrative purposes and not part of the legal contract. Please ask Sales Associate for complete details. © 2025 Chesapeake Homes. Current information as 28th April 2025