



## From \$559,900

This unique plan is big on room and smart on the layout. The Longleaf features over 3,000 square feet of comfortable living space, this beautiful two-story model offers a separate Owner's Suite on the main floor, providing a complete sanctuary of privacy. The spacious Owner's Suite is just off the covered rear porch and the Great Room creates a luxurious space with a large Owner's bath and double walk-in closets. From either the covered front porch, covered rear porch, or three-car garage, enter The Longleaf to find a wide-open floorplan. Effortlessly flow through the kitchen, great room, and dining room. Here, enjoy entertaining family and friends around the optional gourmet kitchen island, 10' Sliding door on the great room, fireplace, Butler's Pantry, and much more. At the front of the house, you will discover a sizable study across from the Powder Room at the foyer and main entrance. The second floor also provides a large flex space with a wide loft/game room. Easily imagine a media room or recreational room in this space accompanied by three bedrooms, a full bath, remote learning area, flex space with a fitness room ...



4 Bedrooms



2.5 Bathrooms



3,086 Sq.Ft.



2 Stories



3 Car Garage

**CONTACT US 757-550-2617**

**WWW.CESHOMES.COM**

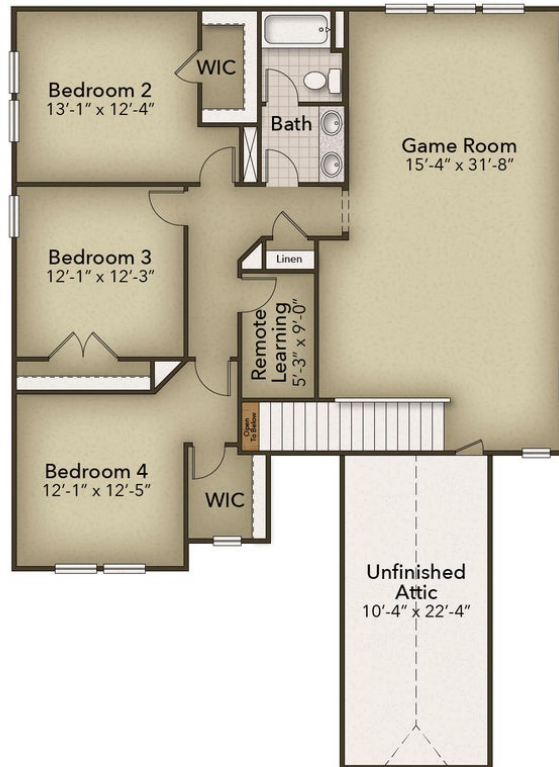




**CONTACT US 757-550-2617**

**WWW.CESHOMES.COM**





**CONTACT US 757-550-2617**

**WWW.CESHOMES.COM**

