



Waterbridge Community

The Goldenrod Floor Plan

Walk into the Goldenrod with over 2,200 square feet of coastal-inspired features. Upon entering from a large covered front porch, discover a foyer with a tray ceiling leading to a spacious wide-open living area. One bedroom and a study with large closets and a full bath are located on the left with an open dining area just ahead. Enjoy an intimate great room area with the tray ceiling. A large, gourmet island in the kitchen offers additional seating and a surplus of counter space for large dinner parties or cooking large meals. Enjoy smaller meals with an extended breakfast area looking out onto the beautiful view of your backyard. From the great room, breeze through sliding glass doors onto a large extended covered porch. The Goldenrod's master suite offers an enormous walk-in closet accompanied by a beautiful master bath with a deluxe seated shower. This home has a second-floor that adds a bedroom, full bath, walk-in closet, and linen closet alongside a spacious loft area. Use this space as a large guest suite, media room, storage, or recreational room. The Goldenrod is full of possibilities. call it "home" today!*Photos ...

\$639,900



4 Bedrooms



3.0 Bathrooms



2,815 Sq.Ft.



2 Stories



2 Car Garage

CONTACT US 757-550-2617

WWW.CESHOMES.COM



FIRST FLOOR

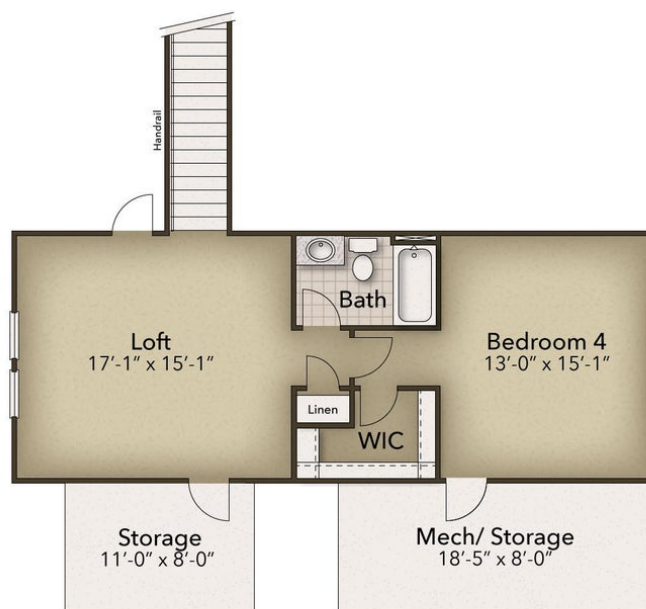


CONTACT US 757-550-2617

WWW.CESHOMES.COM



SECOND FLOOR



CONTACT US 757-550-2617

WWW.CESHOMES.COM

