



Waterbridge Community

The Mangrove Floor Plan

Discover the divine living experience of The Mangrove model. This spacious 3,349 square foot home is perfect for the whole family with four bedrooms and two and a half baths. Downstairs provides essential living space, including a butler's pantry perfect for stocking up on essentials for gatherings and a kitchen island to host those big family gatherings. The second level offers even more space with an Owner's Suite featuring dual closets and a luxurious bath, along with three additional bedrooms and a cozy loft/sitting area. This upstairs living allows you to separate from the first floor activities and relax in your own little retreat. Claim your sanctuary in The Mangrove today! *Photos of Similar Home Shown*

\$712,393

 **5 Bedrooms**

 **3.0 Bathrooms**

 **3,349 Sq.Ft.**

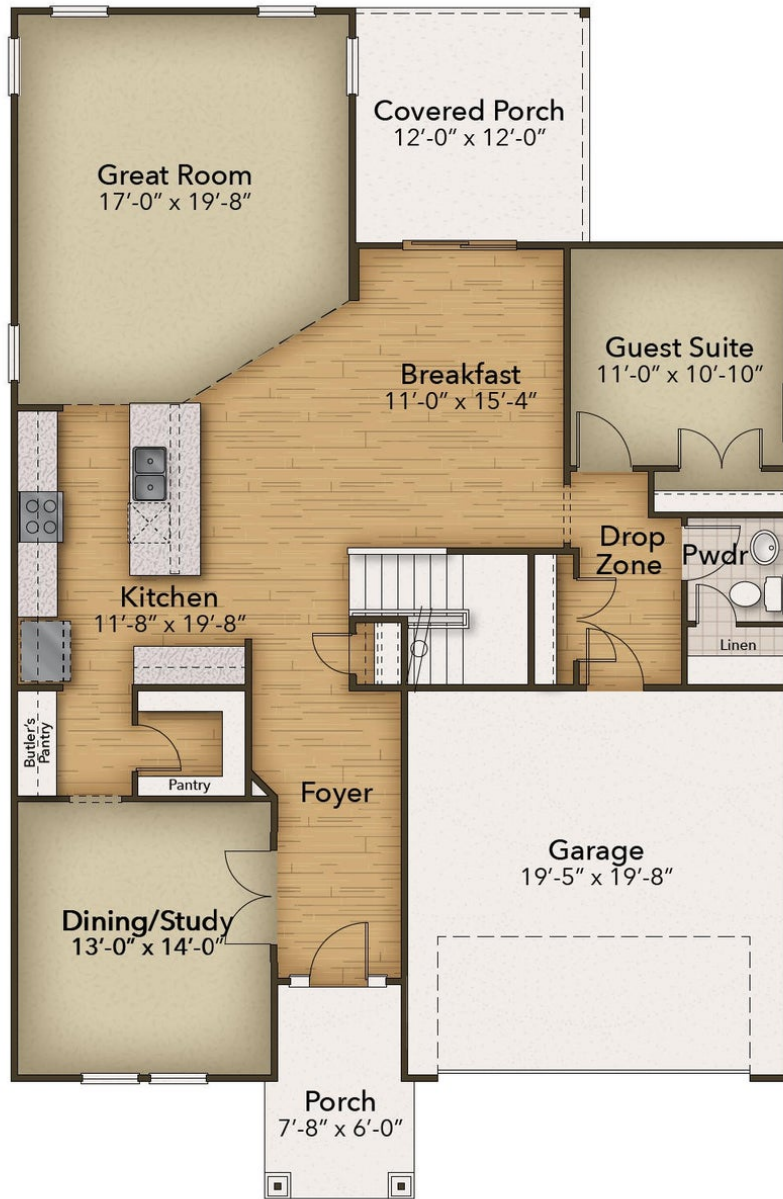
 **2 Stories**

 **2 Car Garage**

CONTACT US 757-550-2617

WWW.CESHOMES.COM

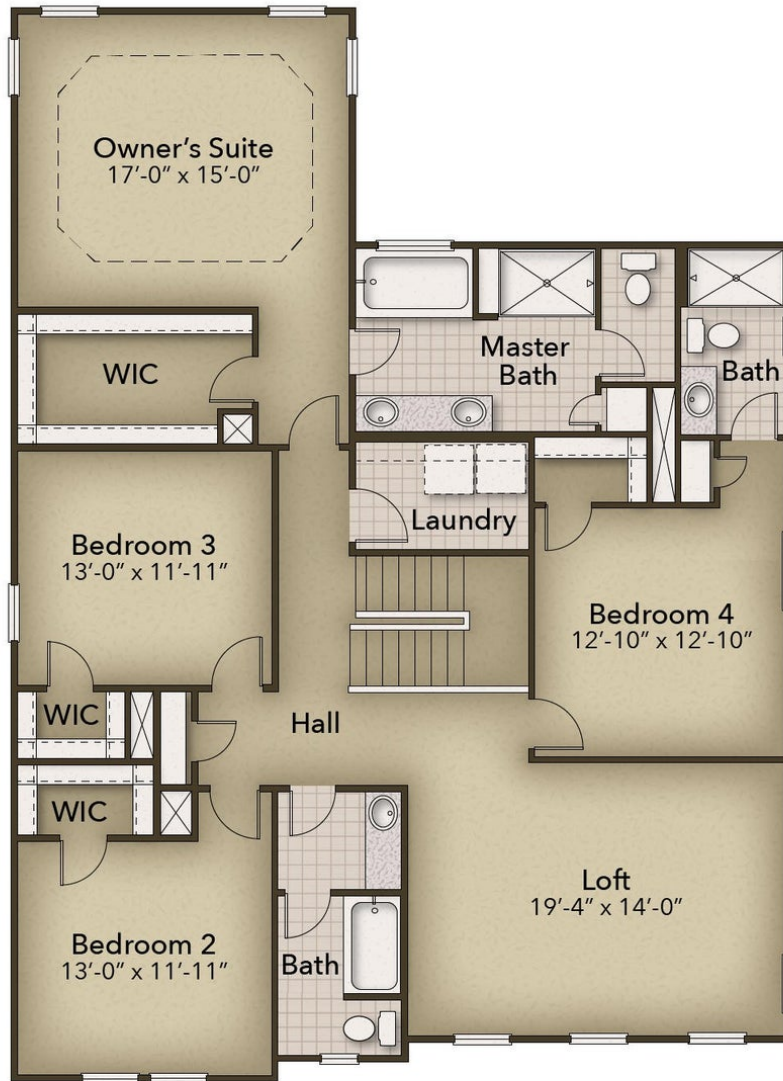




CONTACT US 757-550-2617

WWW.CESHOMES.COM





CONTACT US 757-550-2617

WWW.CESHOMES.COM

