



Waterbridge Community

The Sweetbay Floor Plan

Starting at almost 2,300 square feet, The Sweetbay is a spacious retreat complete with coastal-inspired architectural accents, spacious outdoor living spaces, and a wide-open floorplan. This home features a first-floor owner's suite with a generously sized sitting area. Enter The Sweetbay from the covered porch into a large foyer with your drop zone that connects you to your two-car garage. The drop zone leads to your laundry room perfect for hiding day-to-day messes. Next to you are two bedrooms separated by a full bathroom. Down the hall leads you to a wide-open floorplan with your kitchen perfectly overlooking the great room and large covered rear porch. From the living area either transition to an enormous picturesque covered rear porch or head over to the luxurious owner's suite with a stunning tray ceiling. The owner's suite features a large walk-in closet alongside a luxurious bathroom that feels like a true retreat featuring a seated shower to wash away all of your worries. Upstairs you will find a huge loft space with an additional walk-in closet alongside unfinished storage meaning you will never be short of storage space in this home! This home features so ...

\$583,642



3 Bedrooms



2.0 Bathrooms



2,290 Sq.Ft.



2 Stories



2 Car Garage

CONTACT US 757-550-2617

WWW.CESHOMES.COM

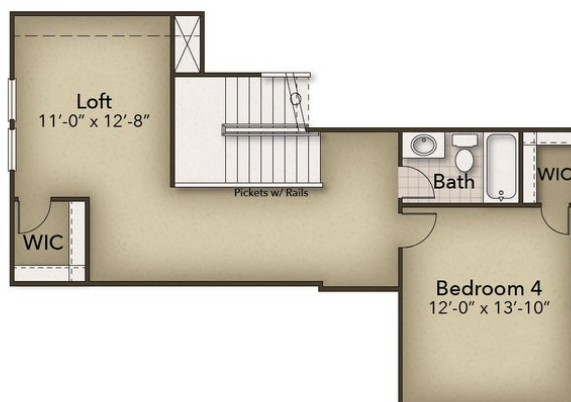




CONTACT US 757-550-2617

WWW.CESHOMES.COM





CONTACT US 757-550-2617

WWW.CESHOMES.COM

