



Waterbridge Community

The Savannah Floor Plan

Exquisite design along with lovely curb appeal, The two-car side load garage set the tone for style and functionality. The large covered front porch is the perfect place to relax and enjoy the evening. Enter into the large foyer with a study on the left with a french door enclosure. Just off the garage is a drop zone area, perfect for dropping off those flip-flops that are coming back from the resort-style pool! The second and third bedrooms, along with large walk-in closets are across from the foyer providing separation from the rest of the downstairs living space. Stroll into the open kitchen with a large pantry, great room, and dining room area, great to gather for an exquisite dinner or relax with family. The large laundry room is conveniently located on the first floor leading past a powder room. The private Owner's Suite with enormous Bathroom and double walk-in closets makes the perfect sanctuary. The second floor provides a loft or game room, fourth and fifth Bedroom, and Full Bathroom. This home ranges from 2,415-3,385 square feet based on the options chosen.

\$699,900



4 Bedrooms



3.5 Bathrooms



3,137 Sq.Ft.



2 Stories

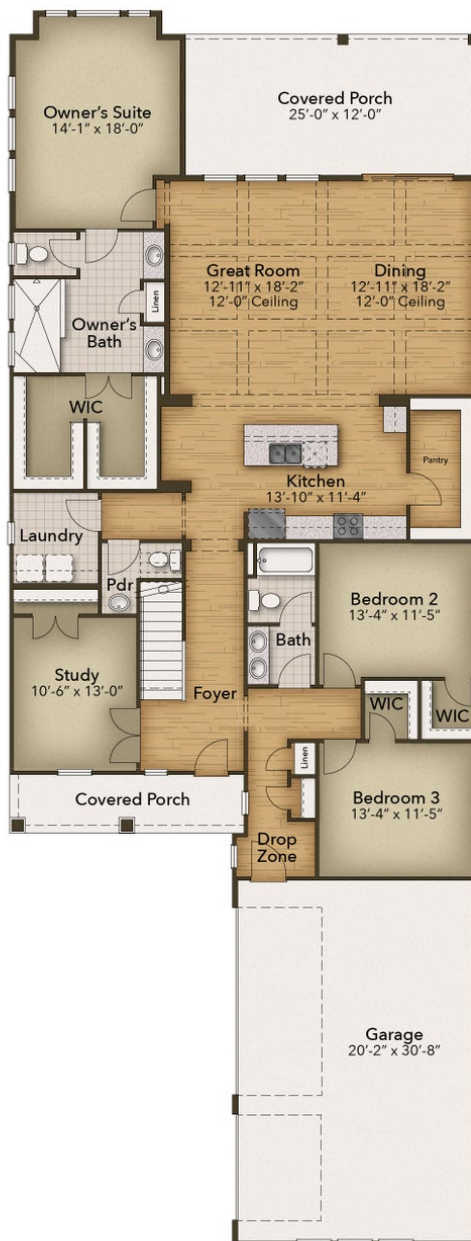


2 Car Garage

CONTACT US 757-550-2617

WWW.CESHOMES.COM

FIRST FLOOR

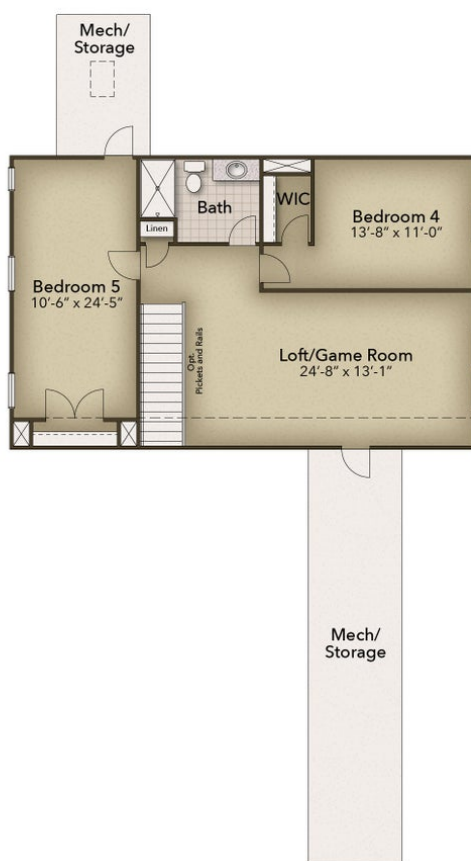


CONTACT US 757-550-2617

WWW.CESHOMES.COM



SECOND FLOOR



CONTACT US 757-550-2617

WWW.CESHOMES.COM

