



## Waterbridge Community

### The Dogwood Floor Plan

Stroll into the Dogwood with over 2,800 square feet of coastal living. Upon entering from the covered front porch, discover a foyer with a spacious flex space that can be used for an office or study. Just inside the garage is a drop zone area for convenience. The second and third bedrooms are just down the hall with a full bathroom in between. Create an intimate great room area with a tray ceiling and wide sliding glass door. A large, gourmet island in the kitchen offers additional seating and a surplus of counter space for large dinner parties or cooking large meals. From the private dining room, breeze down the hall to open into the great room, sunroom, and covered porch, bring the outside in and adding extra natural light to your living space. The upstairs offers a spacious loft and storage with an additional bedroom and full bath. Utilize this space for guests to have their own private getaway! Make the Dogwood your dream home today!

**\$642,114**



4 Bedrooms



3.0 Bathrooms



2,812 Sq.Ft.



2 Stories



2 Car Garage

**CONTACT US 757-550-2617**

**WWW.CESHOMES.COM**



**FIRST FLOOR**

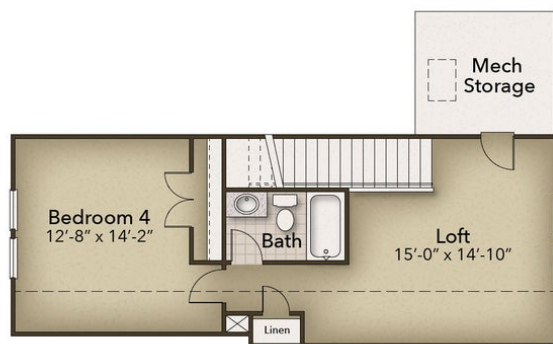


**CONTACT US 757-550-2617**

**WWW.CESHOMES.COM**



## SECOND FLOOR



**CONTACT US** 757-550-2617

**WWW.CESHOMES.COM**

