



From \$394,900

Welcome to the Redbud, where entertainment meets serene living – a crafted experience just for you. Imagine a kitchen that invites culinary creativity with its expansive pantry and elegant center island. Whether you're whipping up a gourmet meal or savoring your favorite takeout, this kitchen is tailored to be the heart of the home. Upgrade your kitchen with a deluxe kitchen island option, making the kitchen the heart of your house. Now, picture yourself unwinding in the luxurious Owner's Suite, your sanctuary. Envision the soft glow of the tray ceiling above as you relax. Dual sinks that cater to a seamless morning routine, a walk-in shower for spa-like rejuvenation, and a closet system that keeps everything in its perfect place – this is the private bath that redefines comfort. With two additional bedrooms and a full bathroom, guests will be comfortable and relish in their our space. Choose to upgrade one of your bedrooms into a private study. With the Redbud, functionality and luxury aren't just included, they are delivered with intention, because you deserve a home that reflects the quality and comfort your life demands. Are you ready to ...



3 Bedrooms



2.0 Bathrooms



1,847 Sq.Ft.



1 Stories



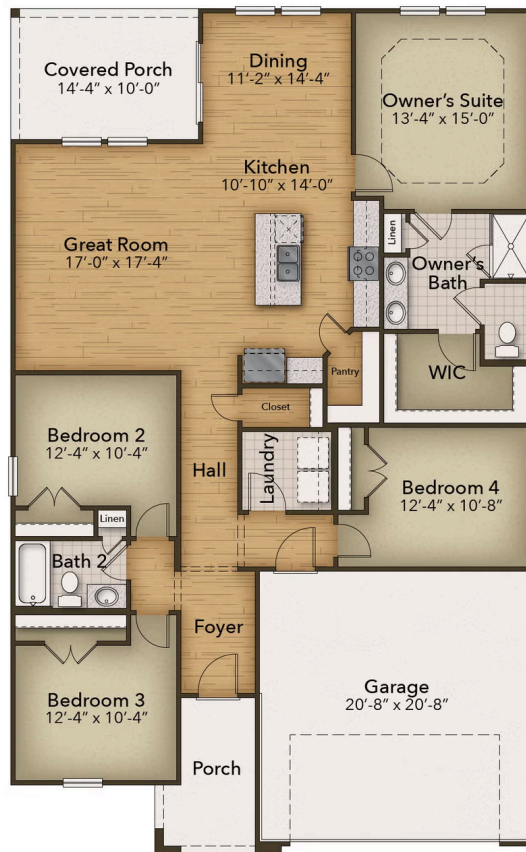
2 Car Garage

CONTACT US 757-550-2617

WWW.CHESHOMES.COM



Chesapeake Homes continuously improves home designs and reserves the right to modify home features and specifications without notice or obligation. Square footage and measurements are approximate. Renderings of elevations are artist's concepts. Floor plans vary per elevation. Chesapeake Homes standard features vary by home design and location, please refer to the included features sheet for the community to define specifications. This brochure is for illustrative purposes and not part of the legal contract. Please ask Sales Associate for complete details. © 2025 Chesapeake Homes. Current information as 28th April 2025



CONTACT US 757-550-2617

WWW.CESHOMES.COM



Cheapeake Homes continuously improves home designs and reserves the right to modify home features and specifications without notice or obligation. Square footage and measurements are approximate. Renderings or elevations are artist's concepts. Floor plans vary per elevation. Cheapeake Homes standard features vary by home design and location, please refer to the included features sheet for the community to define specifications. This brochure is for illustrative purposes and not part of the legal contract. Please ask Sales Associate for complete details. © 2025 Cheapeake Homes. Current information as 28th April 2025