



Traditions at Carolina Forest Community

The Jasmine Floor Plan

The Jasmine is thoughtfully scaled and avoids the bigger is a better approach. With 1,607 square feet of living space and a second-floor option adding an additional 561 square feet, you and your guests can enjoy luxury in an efficient space. With architectural details like tray ceilings in both the great room and owner's suite, along with plenty of windows to keep your space light and airy, you'll delight in choosing the finishing details in the home. The Jasmine offers ample storage space and closets throughout the home, along with options of additional cabinetry in the laundry room and a bench and pegs in the drop zone, keeping your living spaces free from clutter. If you choose to add a second floor to The Jasmine, then you'll be able to offer guests a quiet retreat with a full bathroom, sitting area, and a private bedroom. This plan is full of options to personalize the home to exactly everything you need...and want!

\$445,900

-  2 Bedrooms
-  2.0 Bathrooms
-  1,607 Sq.Ft.
-  2 Stories
-  2 Car Garage

CONTACT US 757-550-2617

WWW.CESHOMES.COM



Chesapeake Homes continuously improves home designs and reserves the right to modify home features and specifications without notice or obligation. Square footage and measurements are approximate. Renderings of elevations are artist's concepts. Floor plans vary per elevation. Chesapeake Homes standard features vary by home design and location, please refer to the included features sheet for the community to define specifications. This brochure is for illustrative purposes and not part of the legal contract. Please ask

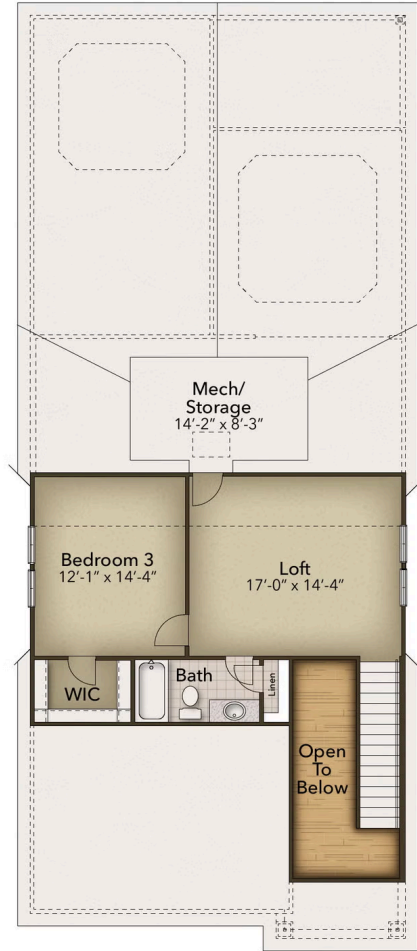


CONTACT US 757-550-2617

WWW.CESHOMES.COM



Chesapeake Homes continuously improves home designs and reserves the right to modify home features and specifications without notice or obligation. Square footage and measurements are approximate. Renderings of elevations are artist's concepts. Floor plans vary per elevation. Chesapeake Homes standard features vary by home design and location, please refer to the included features sheet for the community to define specifications. This brochure is for illustrative purposes and not part of the legal contract. Please ask Sales Associate for complete details. © 2025 Chesapeake Homes. Current information as 4th April 2025



CONTACT US 757-550-2617

WWW.CESHOMES.COM



Chesapeake Homes continuously improves home designs and reserves the right to modify home features and specifications without notice or obligation. Square footage and measurements are approximate. Renderings of elevations are artist's concepts. Floor plans vary per elevation. Chesapeake Homes standard features vary by home design and location, please refer to the included features sheet for the community to define specifications. This brochure is for illustrative purposes and not part of the legal contract. Please ask Sales Associate for complete details. © 2025 Chesapeake Homes. Current information as 4th April 2025