



From \$319,900

The Wren is the perfect combination of an open floor plan and functionality starting with over 1,790 square feet. Upon entering from the covered front porch, the wide-open foyer leads to a generous dining area, kitchen, and great room. A private study or optional third bedroom is on the left as you enter. To personalize this space, choose from a wide range of options, including a gourmet island, tray ceiling, beverage center, and extended rear porch. Whether you're looking for an abundance of counter space, added seating, or a more intimate gathering area, this model's options will serve as the solution. Through the foyer, you'll find a large drop zone with options for additional shelving, and a bench for seating while you unload beach accessories or sand-filled clothes. Beyond the open living space, find a stunning master suite complete with a tray ceiling, enormous walk-in closet, double vanity, and options for a seated shower or deep soaking tub. For more space, add a second floor with floorplan options that include, a fourth bedroom, loft, unfinished storage area, or additional full bathroom. Utilize this space for visiting guests, storage, ...



2 Bedrooms



2.0 Bathrooms



1,792 Sq.Ft.



1 Stories



2 Car Garage

CONTACT US 757-550-2617

WWW.CESHOMES.COM



FIRST FLOOR

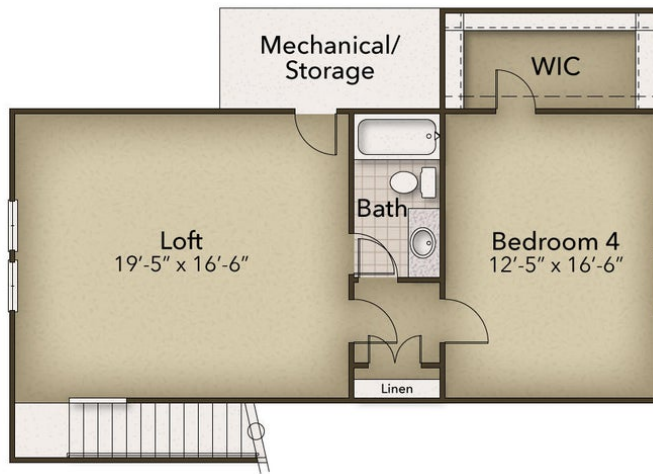


CONTACT US 757-550-2617

WWW.CESHOMES.COM



SECOND FLOOR

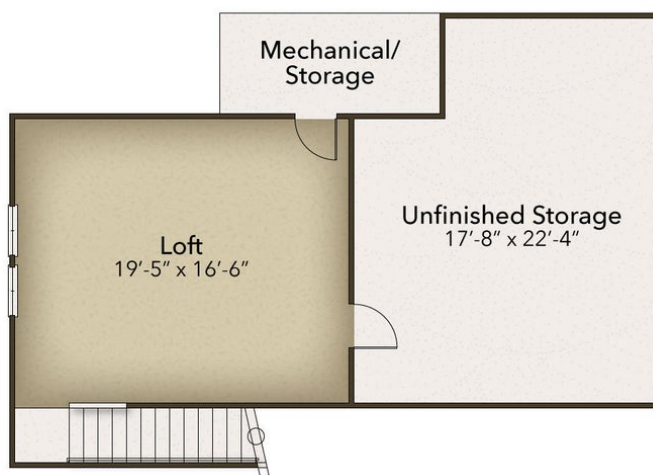


CONTACT US 757-550-2617

WWW.CESHOMES.COM



SECOND FLOOR



CONTACT US 757-550-2617

WWW.CESHOMES.COM



OPTIONS



Deluxe Owner's Bath



Gourmet Kitchen



Third Bedroom



Extended Covered Porch

CONTACT US 757-550-2617

WWW.CESHOMES.COM

