



*From \$309,900*

The Kiawah offers the comforts of your home in a cozy package, complete with all the thoughtful details you would expect in a home from Chesapeake Homes. This home offers 1,574 square feet of living space. Living is easy in The Kiawah's open-concept single-floor living space. The rear covered porch can become an extension of your great room, with sliding glass doors that will lead you outside to enjoy the seasonal weather year-round. The great room, open kitchen, and dining area flow seamlessly from one room to the next. With the option to upgrade your kitchen space with optional double wall ovens and a large center island, your gourmet kitchen will truly enhance the heart of the home. The first-floor Owner's Suite is perfect for main-level living and creates the perfect oasis to come home to after a long day. And finally, delight in the architectural details that will set your home apart with beautifully proportioned windows and trim work that quietly impress. The Kiawah could be exactly what you are looking for in your next home. Schedule your appointment today!



**3 Bedrooms**



**2.0 Bathrooms**



**1,574 Sq.Ft.**



**1 Stories**



**2 Car Garage**

**CONTACT US 757-550-2617**

**WWW.CHESHOMES.COM**



Chesapeake Homes continuously improves home designs and reserves the right to modify home features and specifications without notice or obligation. Square footage and measurements are approximate. Renderings of elevations are artist's concepts. Floor plans vary per elevation. Chesapeake Homes standard features vary by home design and location, please refer to the included features sheet for the community to define specifications. This brochure is for illustrative purposes and not part of the legal contract. Please ask Sales Associate for complete details. © 2025 Chesapeake Homes. Current information as 19th April 2025



## FIRST FLOOR



CONTACT US 757-550-2617

WWW.CHESHOMES.COM

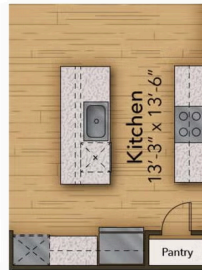


Chesapeake Homes continuously improves home designs and reserves the right to modify home features and specifications without notice or obligation. Square footage and measurements are approximate. Renderings of elevations are artist's concepts. Floor plans vary per elevation. Chesapeake Homes standard features vary by home design and location, please refer to the included features sheet for the community to define specifications. This brochure is for illustrative purposes and not part of the legal contract. Please ask Sales Associate for complete details. © 2025 Chesapeake Homes. Current information as 19th April 2025

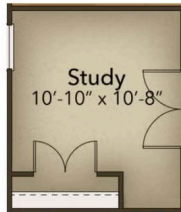
## OPTIONS



Deluxe Owner's Bath



Gourmet Kitchen



Study



Rear Covered Porch

CONTACT US 757-550-2617

WWW.CHESHOMES.COM



Chesapeake Homes continuously improves home designs and reserves the right to modify home features and specifications without notice or obligation. Square footage and measurements are approximate. Renderings of elevations are artist's concepts. Floor plans vary per elevation. Chesapeake Homes standard features vary by home design and location, please refer to the included features sheet for the community to define specifications. This brochure is for illustrative purposes and not part of the legal contract. Please ask Sales Associate for complete details. © 2025 Chesapeake Homes. Current information as 19th April 2025