






Bridgewater - Waterside Village Community

The Goldenrod Floor Plan

Stroll into the Goldenrod - a new plan here at Bridgewater with over 2,100 heated square feet of first-floor primary bedroom home with coastal-inspired features. Upon entering from a large covered front porch, you will enter the foyer with views to the back of the home from the minute you walk in the home. A bedroom and full bath to one side as you enter and an office just a few steps more. You will love the large open dining area just ahead of all future family gatherings. The back end of the home will have 12 ft valeted ceilings and multiple windows for a lot of natural light! A large, gourmet island in the kitchen offers additional seating and a surplus of counter space for large dinner parties or cooking large meals. Enjoy smaller meals with an extended breakfast area looking out onto the beautiful view of your backyard. From the great room, breeze through sliding glass doors onto a large covered porch. The Goldenrod's master suite offers an enormous walk-in closet accompanied by a beautiful master bath with multiple deluxe tile walled seated shower and a deep soaking ...

\$579,900

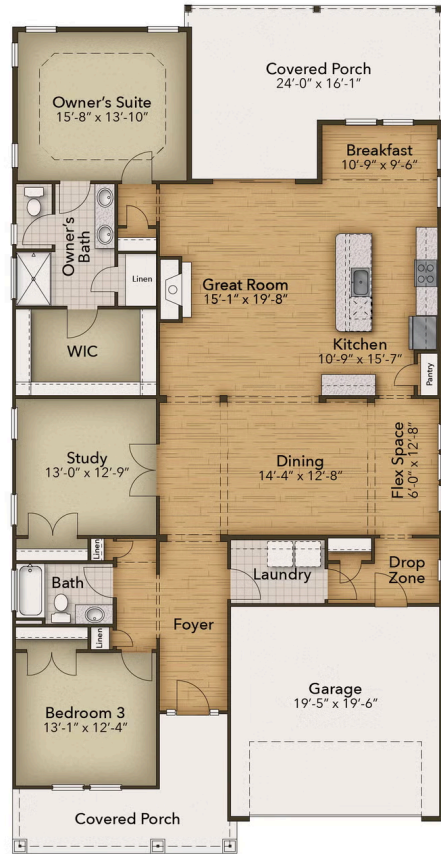
-  3 Bedrooms
-  2.0 Bathrooms
-  2,189 Sq.Ft.
-  1 Stories
-  2 Car Garage

CONTACT US 757-550-2617

WWW.CESHOMES.COM



Chesapeake Homes continuously improves home designs and reserves the right to modify home features and specifications without notice or obligation. Square footage and measurements are approximate. Renderings of elevations are artist's concepts. Floor plans vary per elevation. Chesapeake Homes standard features vary by home design and location, please refer to the included features sheet for the community to define specifications. This brochure is for illustrative purposes and not part of the legal contract. Please ask



CONTACT US 757-550-2617

WWW.CESHOMES.COM



Chesapeake Homes continuously improves home designs and reserves the right to modify home features and specifications without notice or obligation. Square footage and measurements are approximate. Renderings of elevations are artist's concepts. Floor plans vary per elevation. Chesapeake Homes standard features vary by home design and location, please refer to the included features sheet for the community to define specifications. This brochure is for illustrative purposes and not part of the legal contract. Please ask Sales Associate for complete details. © 2025 Chesapeake Homes. Current information as 25th April 2025