



## Bridgewater - Shorehaven Village Community

### The Sunset Cove Floor Plan

Discover the Sunset Cove - Coastal Living Made Easy Enjoy 1,817 sq. ft. of stylish, first-floor living with an open layout, flexible spaces, and coastal-inspired design. This home features a spacious great room, gourmet kitchen with oversized island, and a covered porch—perfect for relaxing or entertaining. The owner's suite offers a luxurious bath and huge walk-in closet, while the second floor adds a loft, bedroom, and full bath. The Sunset Cove is designed to fit your lifestyle. Make it yours today!

**\$557,900**



4 Bedrooms



3.0 Bathrooms



2,548 Sq.Ft.



2 Stories



2 Car Garage

CONTACT US 757-550-2617

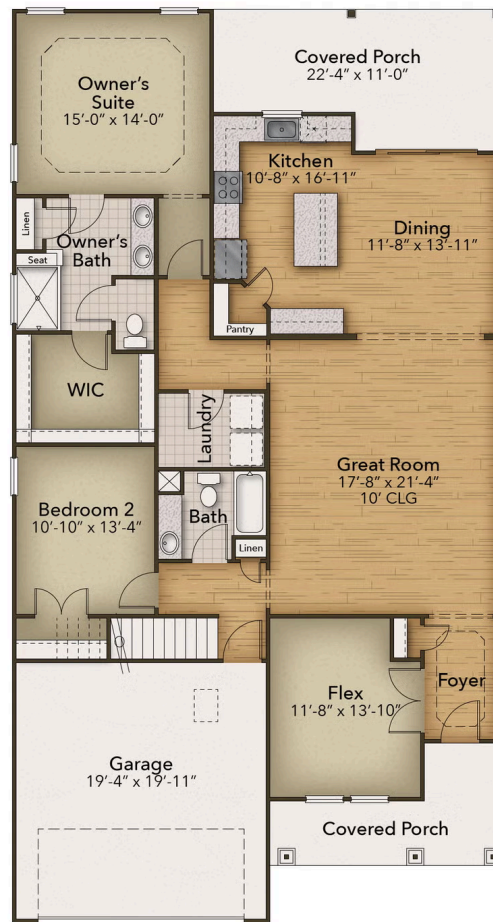
WWW.CESHOMES.COM



Chesapeake Homes continuously improves home designs and reserves the right to modify home features and specifications without notice or obligation. Square footage and measurements are approximate. Renderings of elevations are artist's concepts. Floor plans vary per elevation. Chesapeake Homes standard features vary by home design and location, please refer to the included features sheet for the community to define specifications. This brochure is for illustrative purposes and not part of the legal contract. Please ask



## FIRST FLOOR



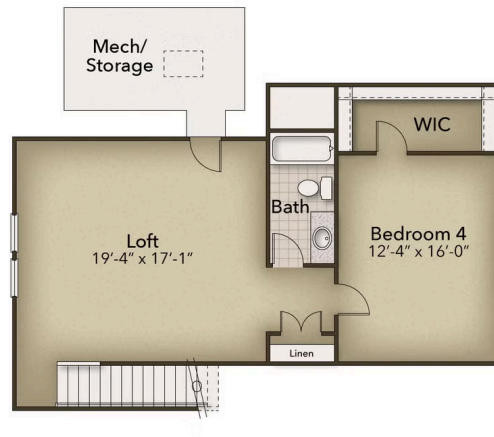
CONTACT US 757-550-2617

[WWW.CHESHOMES.COM](http://WWW.CHESHOMES.COM)



Chesapeake Homes continuously improves home designs and reserves the right to modify home features and specifications without notice or obligation. Square footage and measurements are approximate. Renderings of elevations are artist's concepts. Floor plans vary per elevation. Chesapeake Homes standard features vary by home design and location, please refer to the included features sheet for the community to define specifications. This brochure is for illustrative purposes and not part of the legal contract. Please ask Sales Associate for complete details. © 2025 Chesapeake Homes. Current information as 25th April 2025

## SECOND FLOOR



CONTACT US 757-550-2617

WWW.CHESHOMES.COM



Chesapeake Homes continuously improves home designs and reserves the right to modify home features and specifications without notice or obligation. Square footage and measurements are approximate. Renderings of elevations are artist's concepts. Floor plans vary per elevation. Chesapeake Homes standard features vary by home design and location, please refer to the included features sheet for the community to define specifications. This brochure is for illustrative purposes and not part of the legal contract. Please ask Sales Associate for complete details. © 2025 Chesapeake Homes. Current information as 25th April 2025