



## Bridgewater - Shorehaven Village Community

### The Driftwood Floor Plan

Inspired by the natural beauty of the surrounding area, the Driftwood offers three bedrooms and three baths within nearly 2,700 square feet. This two-story model includes a first-floor master suite, enormous kitchen, outdoor living areas, loft, and ample storage space. Wide, open space connects the great room, casual dining, and extensive kitchen. Prepare meals on a large kitchen island with a view to your covered porch outside. A formal dining room offers an optional set of French doors perfect for intimate dinners or holiday gatherings. Beyond the dining room, accompanied by a full bath, find a quiet study or guest bedroom with a walk-in closet ideal for visiting relatives or an in-law suite. Fully enjoy the beauty of the coastal region with a 300 square foot covered porch or sunroom and covered porch just off the master suite. The master bedroom features an enormous walk-in closet accompanied by a indulgent master bath with multiple options for a deluxe seated shower or enclosed toilet area. Find a personal sanctuary with plenty of natural light and open space. The second floor provides a large flex space with 23' wide loft. Easily imagine a ...

**\$607,900**



**3 Bedrooms**



**3.0 Bathrooms**



**2,704 Sq.Ft.**



**2 Stories**



**2 Car Garage**

**FIRST FLOOR**



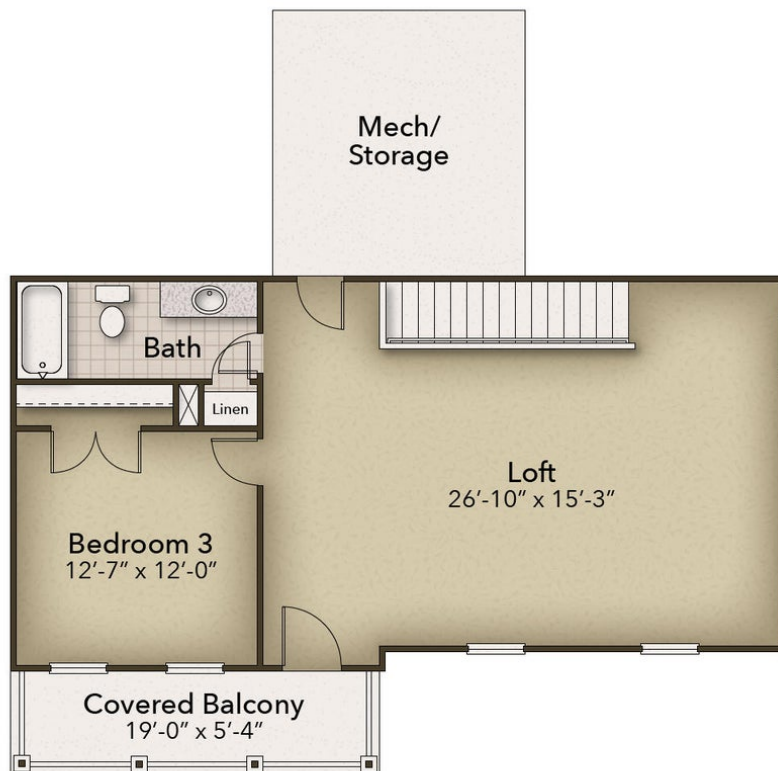
**CONTACT US 757-550-2617**

**WWW.CESHOMES.COM**





## SECOND FLOOR



**CONTACT US 757-550-2617**

**WWW.CESHOMES.COM**

