



## Bridgewater - Shorehaven Village Community

### The Sand Dollar Floor Plan

From the Cottages at Bridgewater comes the Sand Dollar, a two-story model that is home to both luxury and everyday conveniences. With up to 2,994 square feet of living space, this model features four bedrooms and three bathrooms. From a picture-perfect covered front porch, walk through the foyer and past one bedroom and a study with large closets, and one full bathroom. Easily free your hands or unload your car using the drop zone area and adjacent laundry room, located just inside from the two-car garage. Beyond the foyer, find an open and connected great room, kitchen, dining, and breakfast area. Perfect for entertaining guests or hosting family gatherings is the dining room that features a coffered ceiling and a great room that features tray ceiling. Enjoy morning sunrises or evening sunsets from the extended covered porch, situated just off of the great room. Built with exceptional living in mind, this model features a second floor that offers a loft area with an additional bedroom with a walk-in closet, full bathroom and linen closet. Complete with an ample amount of space, the choice is all yours with the Sand Dollar!

**\$614,900**



4 Bedrooms



3.0 Bathrooms



2,994 Sq.Ft.



2 Stories



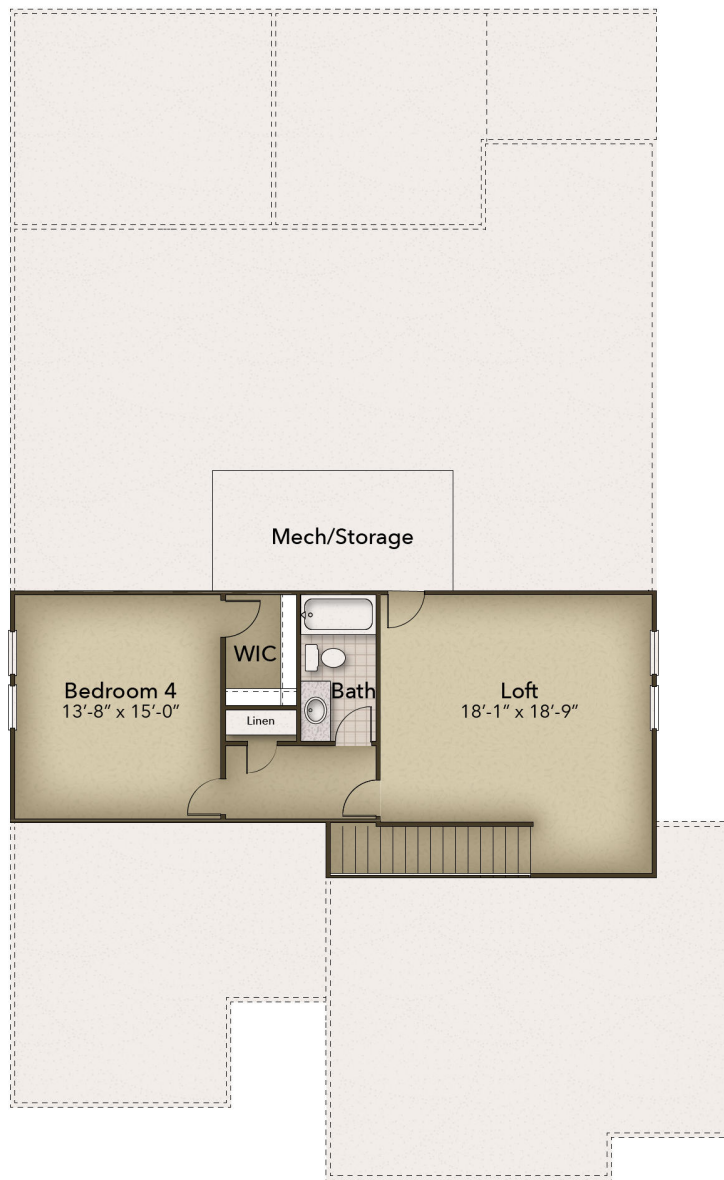
2 Car Garage



**CONTACT US 757-550-2617**

**WWW.CESHOMES.COM**





**CONTACT US 757-550-2617**

**WWW.CESHOMES.COM**

