



Welcome to The Rosemary! This new home features nearly 2,000 square feet of comfortable living space and built-in luxury. With four bedrooms, two and a half to three bathrooms, and a single-car garage, this model has plenty of room for everyone. On the first floor, discover a guest suite or optional study complete with a walk-in closet just past the foyer. Create the perfect in-law suite by choosing to add an optional full bathroom in place of the first-floor powder room. Beyond this awaits a spacious kitchen with a large center island that opens to the airy living and dining area. Imagine summer meals or outdoor gatherings with a patio and connecting walkway from the garage, just off of the living room area. The upstairs gives way to the Owner's Suite, which features a tray ceiling and enormous walk-in closet. Step into the Owner's Bath that includes options for a linen closet, double bowl vanity sink, and deluxe seated shower. This Owner's Suite makes for an exceptional living space. Also on the second floor, find two additional bedrooms with spacious closets, a full bathroom, and a laundry room. Whether you're looking for a ...



4 Bedrooms



2.5 Bathrooms



1,822 Sq.Ft.



2 Stories



1 Car Garage

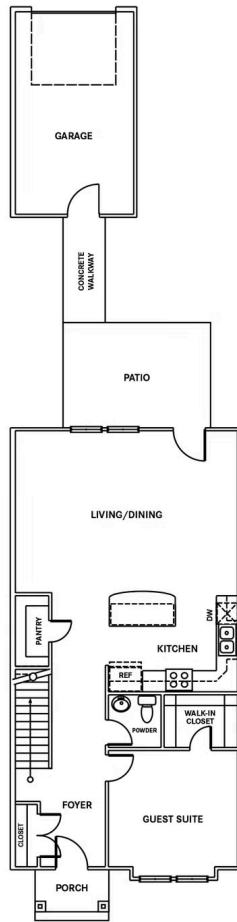
CONTACT US 757-550-2617

WWW.CHESHOMES.COM



Chesapeake Homes continuously improves home designs and reserves the right to modify home features and specifications without notice or obligation. Square footage and measurements are approximate. Renderings of elevations are artist's concepts. Floor plans vary per elevation. Chesapeake Homes standard features vary by home design and location, please refer to the included features sheet for the community to define specifications. This brochure is for illustrative purposes and not part of the legal contract. Please ask Sales Associate for complete details. © 2025 Chesapeake Homes. Current information as 28th April 2025

FIRST FLOOR



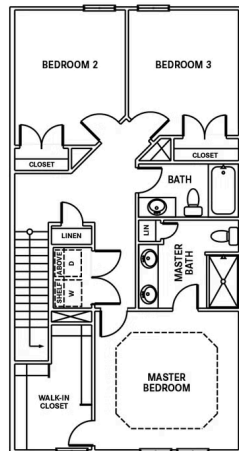
CONTACT US 757-550-2617

WWW.CHESHOMES.COM



Chesapeake Homes continuously improves home designs and reserves the right to modify home features and specifications without notice or obligation. Square footage and measurements are approximate. Renderings of elevations are artist's concepts. Floor plans vary per elevation. Chesapeake Homes standard features vary by home design and location, please refer to the included features sheet for the community to define specifications. This brochure is for illustrative purposes and not part of the legal contract. Please ask Sales Associate for complete details. © 2025 Chesapeake Homes. Current information as 28th April 2025

SECOND FLOOR



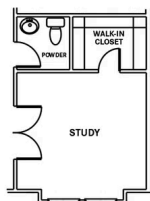
CONTACT US 757-550-2617

WWW.CHESHOMES.COM

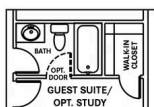


Chesapeake Homes continuously improves home designs and reserves the right to modify home features and specifications without notice or obligation. Square footage and measurements are approximate. Renderings of elevations are artist's concepts. Floor plans vary per elevation. Chesapeake Homes standard features vary by home design and location, please refer to the included features sheet for the community to define specifications. This brochure is for illustrative purposes and not part of the legal contract. Please ask Sales Associate for complete details. © 2025 Chesapeake Homes. Current information as 28th April 2025

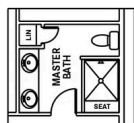
OPTIONS



FIRST FLOOR -
OPT. STUDY



FIRST FLOOR -
OPT. FULL BATH



SECOND FLOOR -
OPT. DELUXE
MASTER BATH

CONTACT US 757-550-2617

WWW.CHESHOMES.COM



Chesapeake Homes continuously improves home designs and reserves the right to modify home features and specifications without notice or obligation. Square footage and measurements are approximate. Renderings of elevations are artist's concepts. Floor plans vary per elevation. Chesapeake Homes standard features vary by home design and location, please refer to the included features sheet for the community to define specifications. This brochure is for illustrative purposes and not part of the legal contract. Please ask Sales Associate for complete details. © 2025 Chesapeake Homes. Current information as 28th April 2025