



From \$404,900

Welcome to The Azalea model! With 3,016 square feet of natural lighting and open space, this floorplan is irresistible. Beyond your dining room or possible study, awaits a large living room opening into the kitchen separated by a large island and breakfast. This spacious area allows for plenty of entertaining. Just beyond the main living area is a guest suite with a generously sized closet. Take the steps and open the double doors to your sanctuary. The Owner's Suite features a sitting room, two huge walk-in closets, and a Owner's Bathroom with double bowl vanity sinks and a linen closet for extra storage. For your everyday convenience, the laundry room is right down the hall. Three additional bedrooms accompany the Owner's Suite, loft area, and two full bathrooms. The Azalea is the perfect home for a growing family with more than enough space for all!



5 Bedrooms



3.5 Bathrooms



3,016 Sq.Ft.



2 Stories



2 Car Garage

CONTACT US 757-550-2617

WWW.CESHOMES.COM



FIRST FLOOR

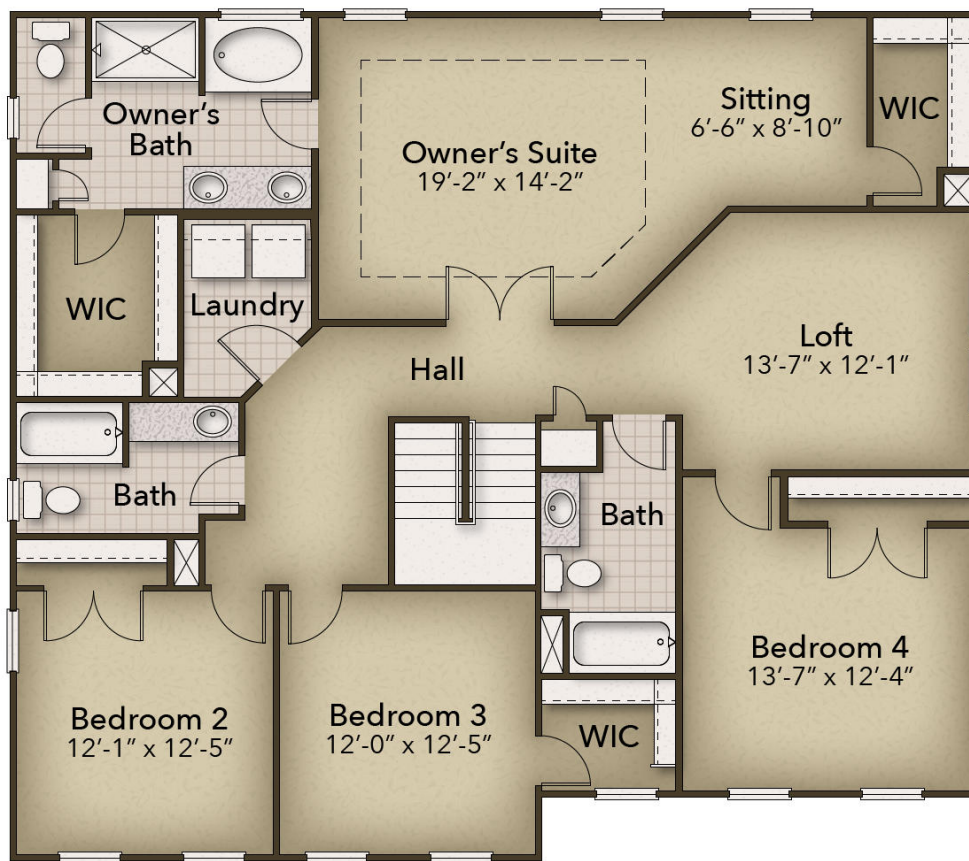


CONTACT US 757-550-2617

WWW.CESHOMES.COM



SECOND FLOOR



CONTACT US 757-550-2617

WWW.CESHOMES.COM

