



From \$356,900

The Rhapsody Basement offers 2,503 square feet of life-enhancing space. Complete with three to five bedrooms, two and a half to four and a half bathrooms, and a two-car garage, this two-story home is the perfect combination of elegant and functional space. From a covered porch, walk into an open and connected kitchen, dining, and great room area that is ideal for both large gatherings or smaller family meals. Just beyond the great room, walk out to a large patio or optional covered porch to enjoy a bit of fresh air year-round. Upstairs, find an enormous master suite alongside two additional bedrooms, both with ample closet space. Offering an extra sense of harmony, the master suite features a tray ceiling, spacious walk-in closet, and luxurious master bathroom. An upstairs laundry room adds convenience to your everyday routine, as well. This model's diverse floor plan options also allow for an added loft, fourth bedroom, or additional full bathroom. Downstairs, an optional finished basement provides a huge amount of additional space. Featuring an additional bedroom with a walk-in closet, full bathroom, large recreational room, patio, mechanical or storage space, and an optional wet bar, ...



5 Bedrooms



3.5 Bathrooms



2,503 Sq.Ft.



2 Stories



2 Car Garage

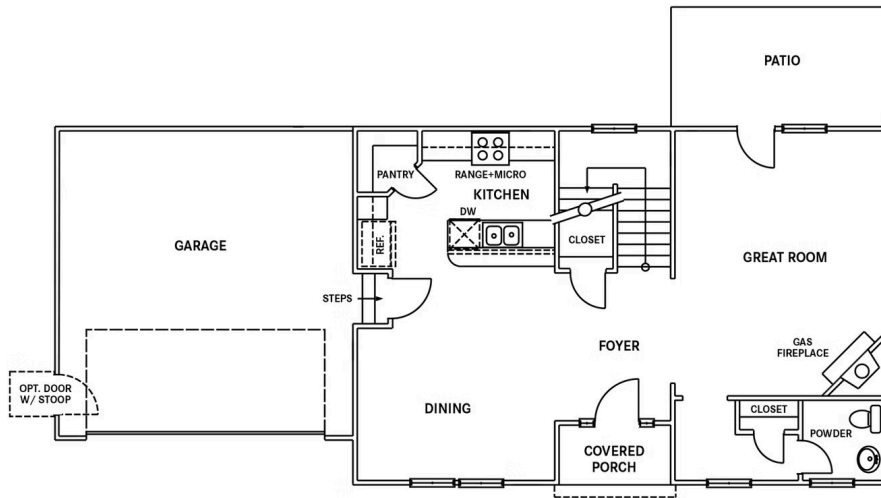
CONTACT US 757-550-2617

WWW.CHESHOMES.COM



Chesapeake Homes continuously improves home designs and reserves the right to modify home features and specifications without notice or obligation. Square footage and measurements are approximate. Renderings of elevations are artist's concepts. Floor plans vary per elevation. Chesapeake Homes standard features vary by home design and location, please refer to the included features sheet for the community to define specifications. This brochure is for illustrative purposes and not part of the legal contract. Please ask Sales Associate for complete details. © 2025 Chesapeake Homes. Current information as 27th April 2025

FIRST FLOOR



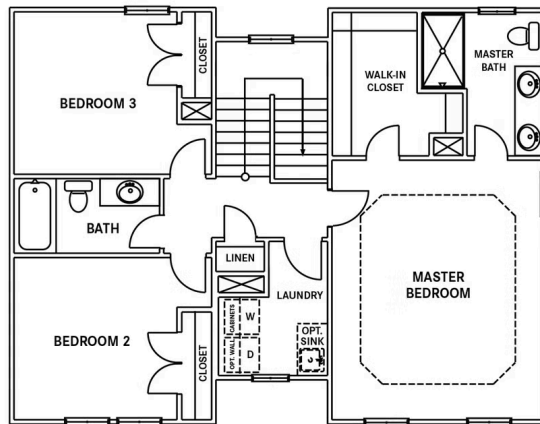
CONTACT US 757-550-2617

WWW.CHESHOMES.COM



Chesapeake Homes continuously improves home designs and reserves the right to modify home features and specifications without notice or obligation. Square footage and measurements are approximate. Renderings of elevations are artist's concepts. Floor plans vary per elevation. Chesapeake Homes standard features vary by home design and location, please refer to the included features sheet for the community to define specifications. This brochure is for illustrative purposes and not part of the legal contract. Please ask Sales Associate for complete details. © 2025 Chesapeake Homes. Current information as 27th April 2025

SECOND FLOOR



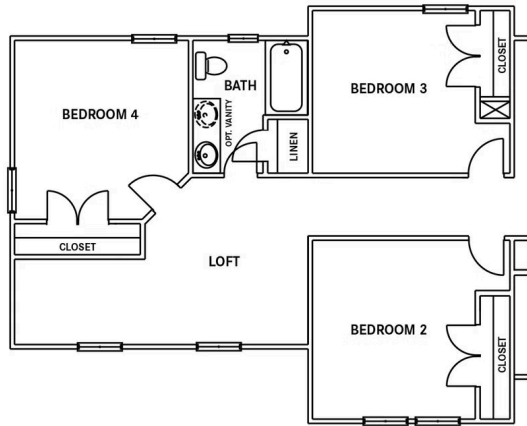
CONTACT US 757-550-2617

WWW.CHESHOMES.COM

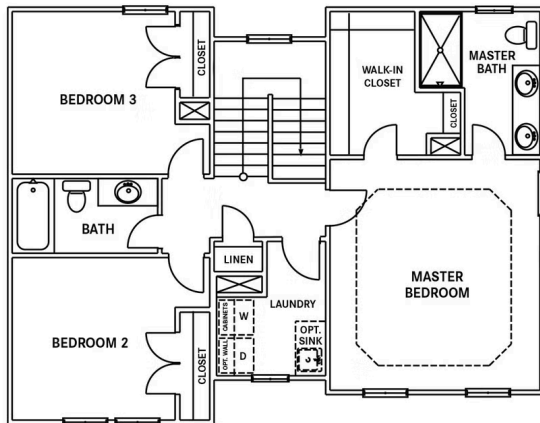


Chesapeake Homes continuously improves home designs and reserves the right to modify home features and specifications without notice or obligation. Square footage and measurements are approximate. Renderings of elevations are artist's concepts. Floor plans vary per elevation. Chesapeake Homes standard features vary by home design and location, please refer to the included features sheet for the community to define specifications. This brochure is for illustrative purposes and not part of the legal contract. Please ask Sales Associate for complete details. © 2025 Chesapeake Homes. Current information as 27th April 2025

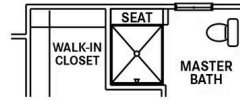
OPTIONS



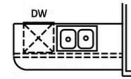
OPT. SECOND FLOOR PLAN AT ROOMS OVER GARAGE



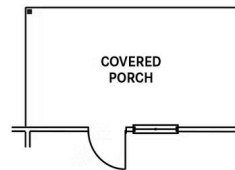
ALT. SECOND FLOOR PLAN AT ELEVATION C/D



OPT. SHOWER
SECOND FLOOR OPTIONS



OPT. FLUSH
COUNTER TOP



OPT. COVERED
PORCH

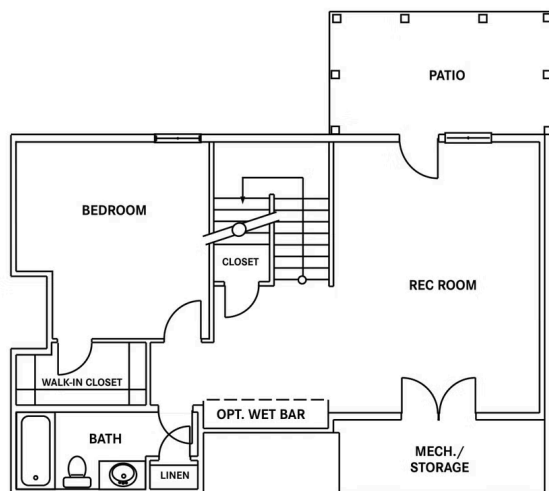
CONTACT US 757-550-2617

WWW.CHESHOMES.COM



Chesapeake Homes continuously improves home designs and reserves the right to modify home features and specifications without notice or obligation. Square footage and measurements are approximate. Renderings of elevations are artist's concepts. Floor plans vary per elevation. Chesapeake Homes standard features vary by home design and location, please refer to the included features sheet for the community to define specifications. This brochure is for illustrative purposes and not part of the legal contract. Please ask Sales Associate for complete details. © 2025 Chesapeake Homes. Current information as 27th April 2025

OPTIONAL FINISHED BASEMENT



**OPT. FINISHED BASEMENT
INCLUDES REC ROOM,
BEDROOM, & BATHROOM**

CONTACT US 757-550-2617

WWW.CHESHOMES.COM



Chesapeake Homes continuously improves home designs and reserves the right to modify home features and specifications without notice or obligation. Square footage and measurements are approximate. Renderings of elevations are artist's concepts. Floor plans vary per elevation. Chesapeake Homes standard features vary by home design and location, please refer to the included features sheet for the community to define specifications. This brochure is for illustrative purposes and not part of the legal contract. Please ask Sales Associate for complete details. © 2025 Chesapeake Homes. Current information as 27th April 2025