



Coastal Club of the Carolinas Community

The Gardenia Floor Plan

The Gardenia offers over 3,800 square feet of beautifully crafted living space, designed to suit your family's lifestyle with both comfort and functionality. This Gardenia floor plan features four bedrooms, three full bathrooms, an additional powder room, and a stunning open-concept layout. The first-floor owner's suite is a serene retreat with elegant tray ceilings, a spacious walk-in closet, and a spa-inspired bathroom. Elevate your daily routine with an upgraded deluxe walk-in shower for ultimate relaxation. From your private suite, step into the expansive great room, which flows effortlessly into the kitchen—offering gourmet upgrades—a cozy breakfast nook, and a dining area adorned with a sophisticated coffered ceiling. The main floor also features two additional bedrooms, a full bathroom, and a versatile den or study located near the foyer, with glass French doors. Convenience meets practicality near the garage entrance, where you'll find a well-designed drop zone, and spacious walk-in laundry room for organization and practicality. The second floor opens up a world of possibilities, offering a large loft, an additional bedroom, full bath and linen storage to fit your family's needs. This

\$769,900



4 Bedrooms



3.5 Bathrooms



3,978 Sq.Ft.



2 Stories



3 Car Garage

CONTACT US 757-550-2617

WWW.CESHOMES.COM



Chesapeake Homes continuously improves home designs and reserves the right to modify home features and specifications without notice or obligation. Square footage and measurements are approximate. Renderings of elevations are artist's concepts. Floor plans vary per elevation. Chesapeake Homes standard features vary by home design and location; please refer to the included features sheet for the community to define specifications. This brochure is for illustrative purposes and not part of the legal contract. Please ask

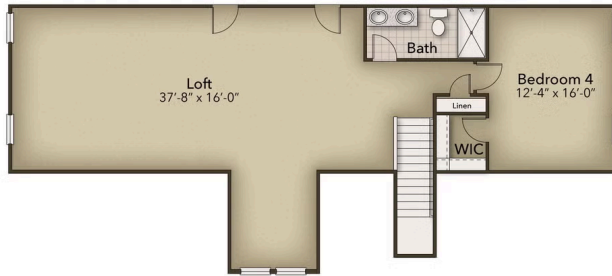


CONTACT US 757-550-2617

WWW.CHESHOMES.COM



Chesapeake Homes continuously improves home designs and reserves the right to modify home features and specifications without notice or obligation. Square footage and measurements are approximate. Renderings of elevations are artist's concepts. Floor plans vary per elevation. Chesapeake Homes standard features vary by home design and location, please refer to the included features sheet for the community to define specifications. This brochure is for illustrative purposes and not part of the legal contract. Please ask Sales Associate for complete details. © 2025 Chesapeake Homes. Current information as 18th April 2025



CONTACT US 757-550-2617

WWW.CHESHOMES.COM



Chesapeake Homes continuously improves home designs and reserves the right to modify home features and specifications without notice or obligation. Square footage and measurements are approximate. Renderings of elevations are artist's concepts. Floor plans vary per elevation. Chesapeake Homes standard features vary by home design and location, please refer to the included features sheet for the community to define specifications. This brochure is for illustrative purposes and not part of the legal contract. Please ask Sales Associate for complete details. © 2025 Chesapeake Homes. Current information as 18th April 2025