



Neill's Pointe Community

The Holly Floor Plan

The Holly layout is a great example of how Chesapeake Homes creates spaces that are both functional and beautiful. This 2,343 square foot home provides homeowners with an included three-car garage, an open-concept great room, a kitchen, and a dining room that leads to a covered rear porch. On the ground floor, you will also find a bedroom and an upgraded to a full bathroom. On the second floor, you will find two spacious bedrooms both with walk-in closets and a full bathroom. The rest of the floor is the open loft that leads to the Owner's suite and laundry room with countertop. The owner's suite has tray ceilings, a deluxe bathroom, and a long walk-in closet. It will be the perfect spot to lay your head down after a long day. This stylish all-in-one build is perfect for the homeowner who wants to be able to customize a home but keep the overall framework of the elegant Holly model.

\$414,900

 4 Bedrooms

 3.0 Bathrooms

 2,343 Sq.Ft.

 2 Stories

 3 Car Garage

CONTACT US 757-550-2617

WWW.CESHOMES.COM



Chesapeake Homes continuously improves home designs and reserves the right to modify home features and specifications without notice or obligation. Square footage and measurements are approximate. Renderings of elevations are artist's concepts. Floor plans vary per elevation. Chesapeake Homes standard features vary by home design and location, please refer to the included features sheet for the community to define specifications. This brochure is for illustrative purposes and not part of the legal contract. Please ask Sales Associate for complete details. © 2025 Chesapeake Homes. Current information as 8th April 2025

FIRST FLOOR



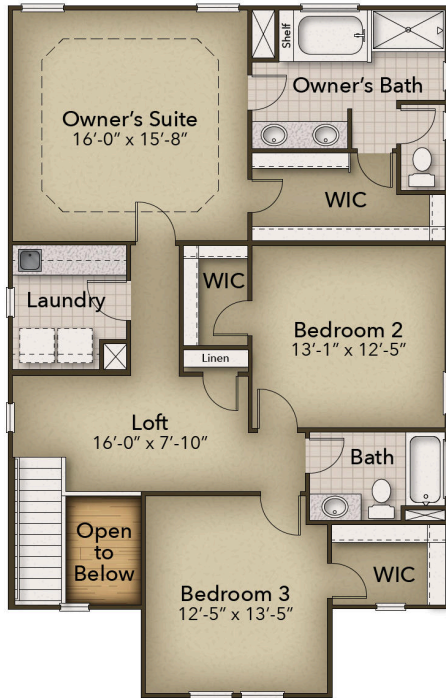
CONTACT US 757-550-2617

WWW.CESHOMES.COM



Chesapeake Homes continuously improves home designs and reserves the right to modify home features and specifications without notice or obligation. Square footage and measurements are approximate. Renderings of elevations are artist's concepts. Floor plans vary per elevation. Chesapeake Homes standard features vary by home design and location, please refer to the included features sheet for the community to define specifications. This brochure is for illustrative purposes and not part of the legal contract. Please ask Sales Associate for complete details. © 2025 Chesapeake Homes. Current information as 8th April 2025

SECOND FLOOR



CONTACT US 757-550-2617

WWW.CESHOMES.COM



Chesapeake Homes continuously improves home designs and reserves the right to modify home features and specifications without notice or obligation. Square footage and measurements are approximate. Renderings of elevations are artist's concepts. Floor plans vary per elevation. Chesapeake Homes standard features vary by home design and location, please refer to the included features sheet for the community to define specifications. This brochure is for illustrative purposes and not part of the legal contract. Please ask Sales Associate for complete details. © 2025 Chesapeake Homes. Current information as 8th April 2025