



From \$499,900

Starting at almost 2,300 square feet, The Sweetbay is a spacious retreat complete with coastal-inspired architectural accents, spacious outdoor living spaces, and a wide-open floorplan. This home features a first-floor owner's suite with a generously sized sitting area. Enter The Sweetbay from the spacious covered porch into a large foyer with your drop zone to the left that connects you to your two-car garage. The drop zone leads to your laundry room perfect for hiding day-to-day messes. To your right is two bedrooms separated by a full bathroom. Down the hall leads you to a wide-open floorplan with your kitchen perfectly overlooking the great room and large covered rear porch. From the living area either transition to an enormous picturesque covered rear porch which can be made more intimate with an optional outdoor fireplace or head over to the luxurious owner's suite with a stunning tray ceiling. The owner's suite features a large walk-in closet alongside a luxurious bathroom that feels like a true retreat featuring a seated shower and options for a deep soaking tub to wash away all of your worries. Upstairs you will find a huge loft space with ...



3 Bedrooms



2.0 Bathrooms



2,290 Sq.Ft.



2 Stories



2 Car Garage

CONTACT US 757-550-2617

WWW.CESHOMES.COM



Chesapeake Homes continuously improves home designs and reserves the right to modify home features and specifications without notice or obligation. Square footage and measurements are approximate. Renderings of elevations are artist's concepts. Floor plans vary per elevation. Chesapeake Homes standard features vary by home design and location, please refer to the included features sheet for the community to define specifications. This brochure is for illustrative purposes and not part of the legal contract. Please ask Sales Associate for complete details. © 2024 Chesapeake Homes. Current information as 20th May 2024

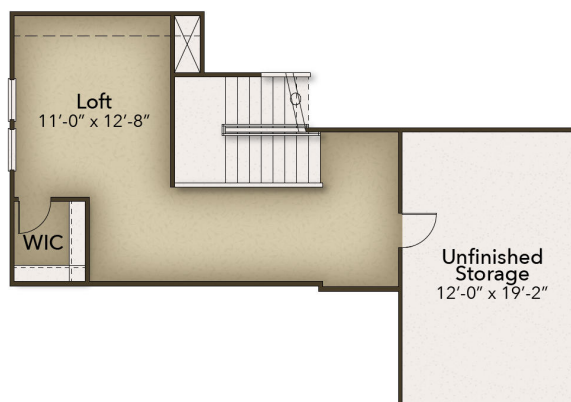


CONTACT US 757-550-2617

WWW.CESHOMES.COM



Chesapeake Homes continuously improves home designs and reserves the right to modify home features and specifications without notice or obligation. Square footage and measurements are approximate. Renderings of elevations are artist's concepts. Floor plans vary per elevation. Chesapeake Homes standard features vary by home design and location, please refer to the included features sheet for the community to define specifications. This brochure is for illustrative purposes and not part of the legal contract. Please ask Sales Associate for complete details. © 2024 Chesapeake Homes. Current information as 20th May 2024



CONTACT US 757-550-2617

WWW.CESHOMES.COM



Chesapeake Homes continuously improves home designs and reserves the right to modify home features and specifications without notice or obligation. Square footage and measurements are approximate. Renderings of elevations are artist's concepts. Floor plans vary per elevation. Chesapeake Homes standard features vary by home design and location, please refer to the included features sheet for the community to define specifications. This brochure is for illustrative purposes and not part of the legal contract. Please ask Sales Associate for complete details. © 2024 Chesapeake Homes. Current information as 20th May 2024