



From \$549,900

This unique plan is big on room and smart on the layout. The Longleaf features over 3,000 square feet of comfortable living space, this beautiful two-story model offers a separate Owner's Suite on the main floor, providing a complete sanctuary of privacy. The spacious Owner's Suite is just off the covered rear porch and the Great Room creates a luxurious space with a large Owner's bath and double walk-in closets. From either the covered front porch, covered rear porch, or three-car garage, enter The Longleaf to find a wide-open floorplan. Effortlessly flow through the kitchen, great room, and dining room. Here, enjoy entertaining family and friends around the optional gourmet kitchen island, 10' Sliding door on the great room, fireplace, Butler's Pantry, and much more. At the front of the house, you will discover a sizable study across from the Powder Room at the foyer and main entrance. The second floor also provides a large flex space with a wide loft/game room. Easily imagine a media room or recreational room in this space accompanied by three bedrooms, a full bath, remote learning area, flex space with a fitness room ...



4 Bedrooms



2.5 Bathrooms



3,086 Sq.Ft.



2 Stories



3 Car Garage

CONTACT US 757-550-2617

WWW.CESHOMES.COM



Chesapeake Homes continuously improves home designs and reserves the right to modify home features and specifications without notice or obligation. Square footage and measurements are approximate. Renderings of elevations are artist's concepts. Floor plans vary per elevation. Chesapeake Homes standard features vary by home design and location, please refer to the included features sheet for the community to define specifications. This brochure is for illustrative purposes and not part of the legal contract. Please ask Sales Associate for complete details. © 2024 Chesapeake Homes. Current information as 20th May 2024

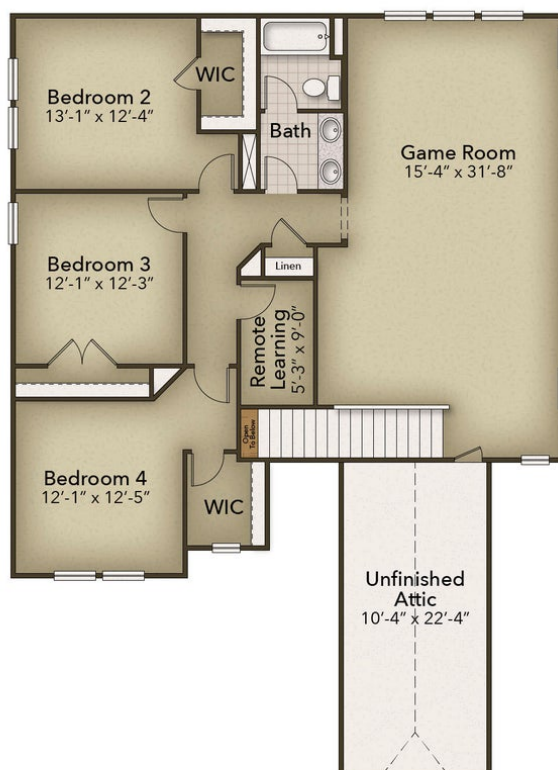


CONTACT US 757-550-2617

WWW.CESHOMES.COM



Chesapeake Homes continuously improves home designs and reserves the right to modify home features and specifications without notice or obligation. Square footage and measurements are approximate. Renderings of elevations are artist's concepts. Floor plans vary per elevation. Chesapeake Homes standard features vary by home design and location, please refer to the included features sheet for the community to define specifications. This brochure is for illustrative purposes and not part of the legal contract. Please ask Sales Associate for complete details. © 2024 Chesapeake Homes. Current information as 20th May 2024



CONTACT US 757-550-2617

WWW.CESHOMES.COM