



The Willows Community

The Boardwalk Floor Plan

Welcome to the Boardwalk, a stunning coastal-inspired home with over 2,100 square feet of first-floor features. As you enter from the spacious covered front porch, or the three car garage, you'll be greeted by a foyer. On the left, you'll find two bedrooms with large closets and a full bath. Ahead, an open dining area awaits with coffered ceiling. The great room has been transformed into an intimate space with a tray ceiling. The kitchen boasts a large gourmet island, perfect for entertaining, and a breakfast area with a view of the backyard. Step through sliding glass doors onto the covered porch. The Owner's suite in the Boardwalk is a retreat with an enormous walk-in closet and a stunning owner bath with a deluxe seated shower. The Boardwalk will suit your every need. Experience the possibilities and make the Boardwalk your perfect "home" today!

\$424,397



3 Bedrooms



2.0 Bathrooms



2,189 Sq.Ft.



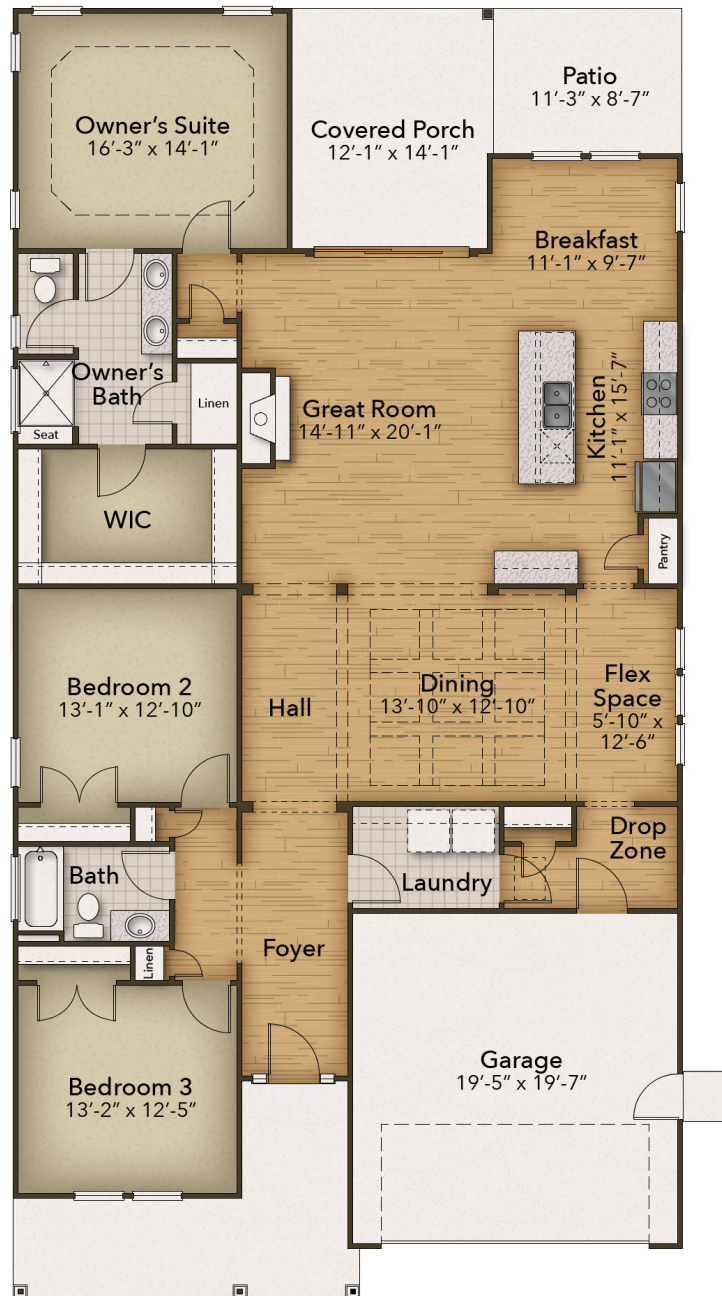
1 Stories



2 Car Garage

CONTACT US 757-550-2617

WWW.CESHOMES.COM



CONTACT US 757-550-2617

WWW.CESHOMES.COM



Chesapeake Homes continuously improves home designs and reserves the right to modify home features and specifications without notice or obligation. Square footage and measurements are approximate. Renderings of elevations are artist's concepts. Floor plans vary per elevation. Chesapeake Homes standard features vary by home design and location, please refer to the included features sheet for the community to define specifications. This brochure is for illustrative purposes and not part of the legal contract. Please ask Sales Associate for complete details. © 2024 Chesapeake Homes. Current information as 20th May 2024