



The Willows Community

The Boardwalk Floor Plan

Welcome to the Boardwalk, a stunning coastal-inspired home with over 2,100 square feet of features. As you enter from the spacious covered front porch, you'll be greeted by a foyer with an optional tray ceiling and a convenient drop zone area. On the left, you'll find two bedrooms with large closets and a full bath. Ahead, an open dining area awaits. Choose to add an intricate coffer ceiling or beautiful barn doors. The great room can be transformed into an intimate space with a tray ceiling or gas fireplace. The kitchen boasts a large gourmet island, perfect for entertaining, and a breakfast area with a view of the backyard. Step through sliding glass doors onto the covered porch, which can be customized with an outdoor fireplace. The Owner's suite in the Boardwalk is a retreat with an enormous walk-in closet and a stunning owner bath. Customize your bath with options for a deluxe seated shower or deep soaking tub. An optional second-floor plan adds a bedroom, full bath, walk-in closet, linen closet, and a spacious loft area. Use this versatile space as a guest suite, media room, storage, or ...

\$449,900



4 Bedrooms



3.0 Bathrooms



2,815 Sq.Ft.



2 Stories



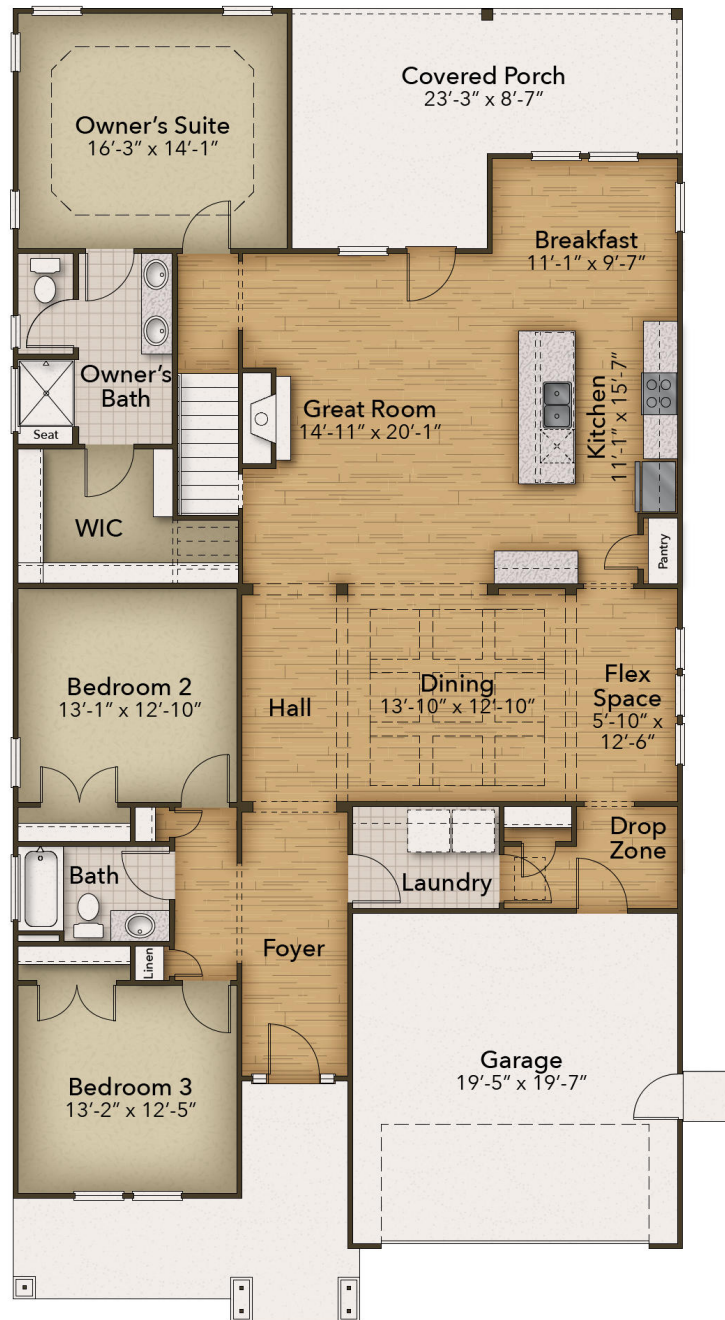
2 Car Garage

CONTACT US 757-550-2617

WWW.CESHOMES.COM



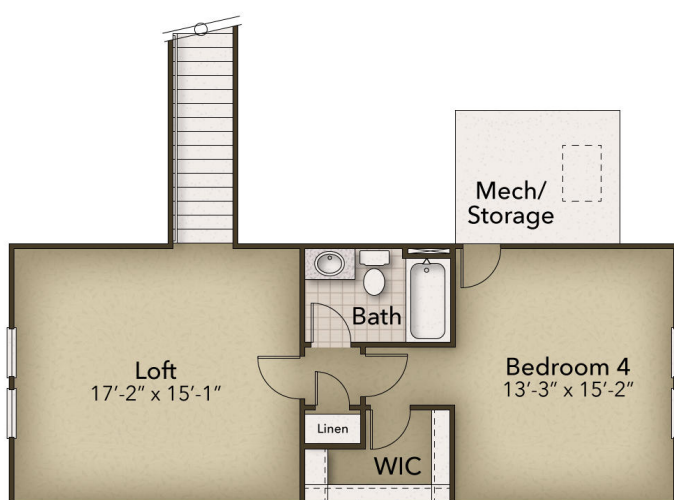
Chesapeake Homes continuously improves home designs and reserves the right to modify home features and specifications without notice or obligation. Square footage and measurements are approximate. Renderings of elevations are artist's concepts. Floor plans vary per elevation. Chesapeake Homes standard features vary by home design and location, please refer to the included features sheet for the community to define specifications. This brochure is for illustrative purposes and not part of the legal contract. Please ask Sales Associate for complete details. © 2024 Chesapeake Homes. Current information as 20th May 2024



CONTACT US 757-550-2617

WWW.CESHOMES.COM





CONTACT US 757-550-2617

WWW.CESHOMES.COM



Chesapeake Homes continuously improves home designs and reserves the right to modify home features and specifications without notice or obligation. Square footage and measurements are approximate. Renderings of elevations are artist's concepts. Floor plans vary per elevation. Chesapeake Homes standard features vary by home design and location, please refer to the included features sheet for the community to define specifications. This brochure is for illustrative purposes and not part of the legal contract. Please ask Sales Associate for complete details. © 2024 Chesapeake Homes. Current information as 20th May 2024